



## 3/44A Bayswater Road RUSHCUTTERS BAY, NSW

3 bed | 3 bath | 1 car

**R&W**

Located in the cul-de-sac end of the street this house-like apartment offers 249sqm of living space over two custom-appointed levels. Offering a sophisticated inner city haven. Unique in the c1910 Brentwood, it features a house-like spacious layout with 3 separate living zones showcasing a fusion of classical architecture and cutting-edge design. Designed with a focus on entertaining and featuring every luxury, only 200m to the station, Macleay Street's chic cafes and galleries and picturesque Rushcutters Bay Park.

[rwebay.com.au/3680605](http://rwebay.com.au/3680605)

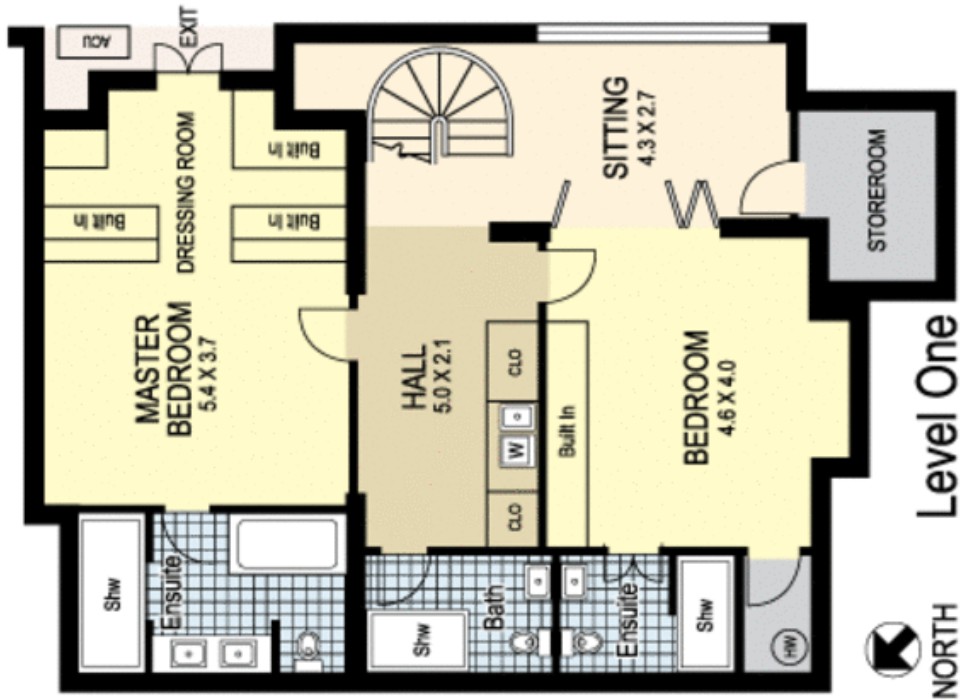
Jason Boon 0418 671 494

Geoff Cox 0418 231 004

**Proudly Richardson&Wrench**

Richardson & Wrench Elizabeth Bay / Potts Point  
02 8356 2700

Every precaution has been taken to establish accuracy of the information in this brochure but does not constitute any representation by the vendor or agent.



3 / 44A Bayswater Road RUSHCUTTERS BAY  
 "BRENTWOOD"



Elizabeth Bay / Potts Point  
 85356 8700

Plans shown are for presentation purposes only and are not part of any legal document or title and are subject to errors, omissions, inaccuracies and they should not be used as the sole guide for accurate reference for purchasing decisions. Interested parties should make their own enquiries using other sources supplied. Dimensions in length and width are approximate. Illustration by Royal LePage (41112550)