



## 704/174-182 Goulburn Street SURRY HILLS, NSW

1 bed | 1 bath

**R&W**

Located on an elevated 7th floor position with a sunny east aspect, this contemporary designed apartment exemplifies cosmopolitan urban living.

Features throughout:

- \*Large 51sqm flexible floor plan with abundance of natural light
- \*Floor to ceiling glass doors & windows with district views
- \*Brand new carpets & freshly painted throughout

[rwebay.com.au/3687019](http://rwebay.com.au/3687019)

Rod Angus 0419 599 888

**Proudly Richardson & Wrench**

Richardson & Wrench Elizabeth Bay / Potts Point  
02 8356 2700

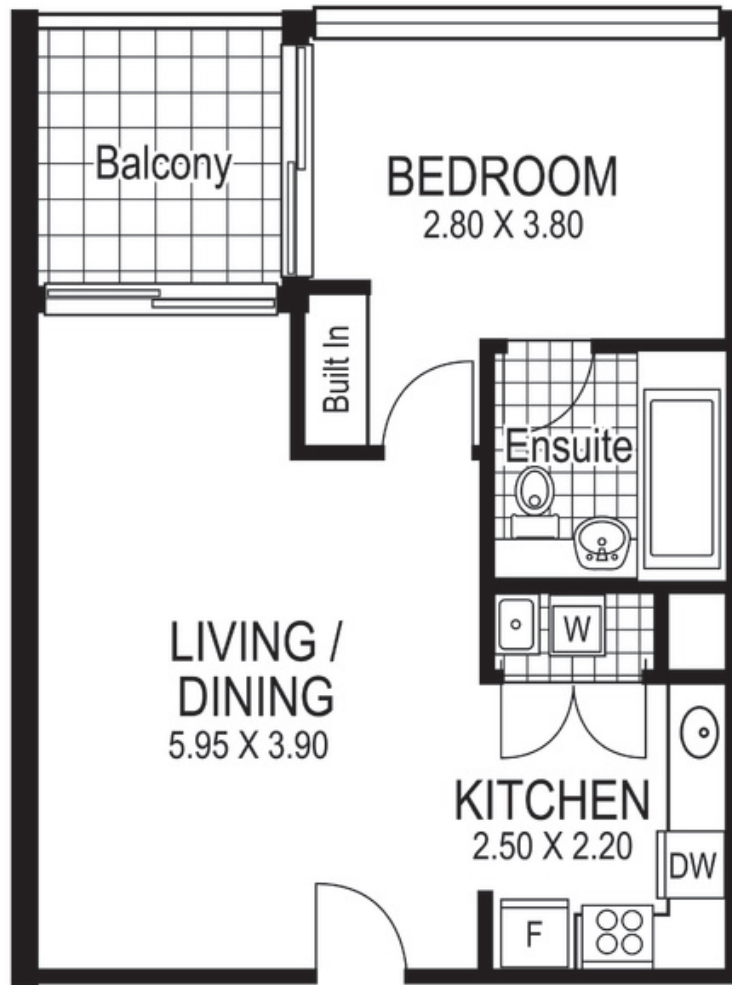
**R&W**

Elizabeth Bay / Potts Point  
8356 2700

Contact:  
Rod Angus  
0419 599 888



NORTH



704 / 174-182 Goulburn Street  
SURRY HILLS

*"THE MARBURY"*

Plans shown are for presentation purposes only and are not part of any legal document or title and are subject to errors, omissions inaccuracies and they should not be used as the sole and/or accurate reference for purchasing decision. Interested parties should make their own inquiries using other sources supplied. Dimensions in length and width are approximate. Illustration by Raoul Isidro 0411128500

Every precaution has been taken to establish accuracy of the information in this brochure but does not constitute any representation by the vendor or agent.

**R&W**