



## 12/22 Roslyn Gardens ELIZABETH BAY, NSW

2 bed | 1 bath

**R&W**

- \* Renowned building, fine example of Sydney Art Deco
- \* Fantastic peaceful space on sought-after street
- \* Stylish deco features, curved lines and high ceilings
- \* Bright living/dining rooms, generously proportioned
- \* Main bedroom with handy dual entry + extensive b/ins
- \* 2nd bedroom with b/ins + westerly aspect
- \* Gas kitchen, Smeg appliances, plenty of cupboard space
- \* Spacious modern bathroom w separate bath and shower
- \* Internal laundry space in kitchen, hallway storage space

[rwebay.com.au/3721609](http://rwebay.com.au/3721609)

Jason Boon 0418 671 494

**Proudly Richardson&Wrench**

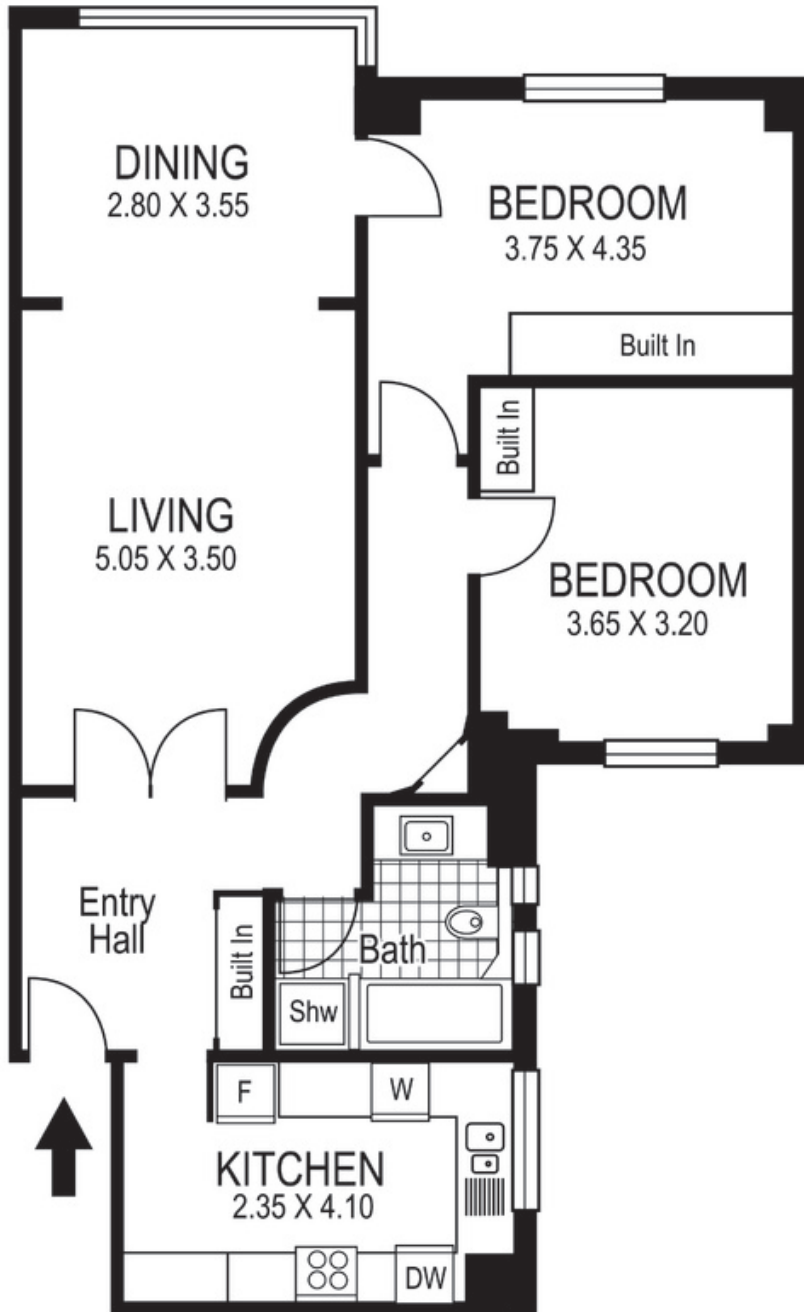
Richardson & Wrench Elizabeth Bay / Potts Point  
02 8356 2700



NORTH

**R&W**

Elizabeth Bay / Potts Point  
8356 2700



## 12 / 22 Roslyn Gardens ELIZABETH BAY *"THE WROXTON"*

Plans shown are for presentation purposes only and are not part of any legal document or title and are subject to errors, omissions inaccuracies and they should not be used as the sole and/or accurate reference for purchasing decision. Interested parties should make their own inquiries using other sources supplied. Dimensions in length and width are approximate. Illustration by Raoul Isidro 0411128500

Every precaution has been taken to establish accuracy of the information in this brochure but does not constitute any representation by the vendor or agent.

**R&W**