



38 Macleay Street POTTS POINT, NSW

3 bed | 3 bath | 3 car

Presiding over Elizabeth Bay to the east and capturing ...

R&W

rwebay.com.au/3731238

Jason Boon 0418 671 494

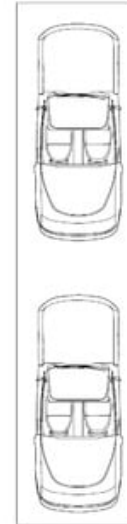
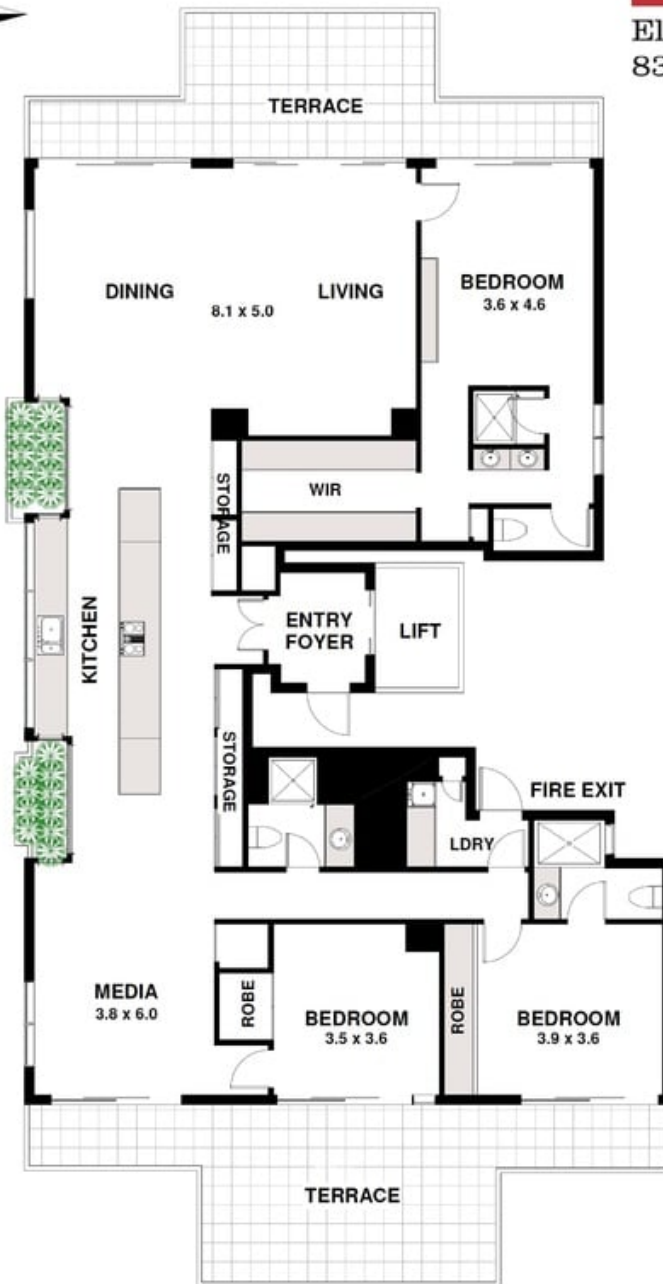
Geoff Cox 0418 231 004

Proudly Richardson&Wrench

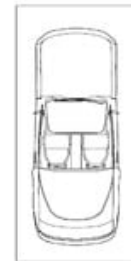
Richardson & Wrench Elizabeth Bay / Potts Point
02 8356 2700



Elizabeth Bay / Potts Point
8356 2700



TANDEM UNDERCOVER
SECURE PARKING
2.5 x 11.0



UNDERCOVER
PARKING
2.6 x 5.4



STORAGE
1.2 x 4.3

7/38 Macleay Street POTTS POINT "The Dorchester"

Plans shown are for presentation purposes only and are not part of any legal document or title and are subject to errors, omissions, inaccuracies and they should not be used as sole and/or accurate reference for purchasing decision. Interested parties should make their own enquiries using other sources supplied. Dimensions shown on the plans are approximate values in length by width.

