



## 12/94 Tenterden Road BOTANY, NSW

2 bed | 1 bath | 1 car

Positioned on the top floor with a perfect sunny North East aspect, this contemporary designed apartment exemplifies modern living.

Features throughout:

- \*Large flexible floor plan with abundance of natural light
- \*Great 180 degree district views from all the apartment rooms
- \*Freshly painted, floating floors & new lighting throughout
- \*No common walls, beautiful cross flow ventilation

# R&W

[rwebay.com.au/3742301](http://rwebay.com.au/3742301)

Rod Angus 0419 599 888

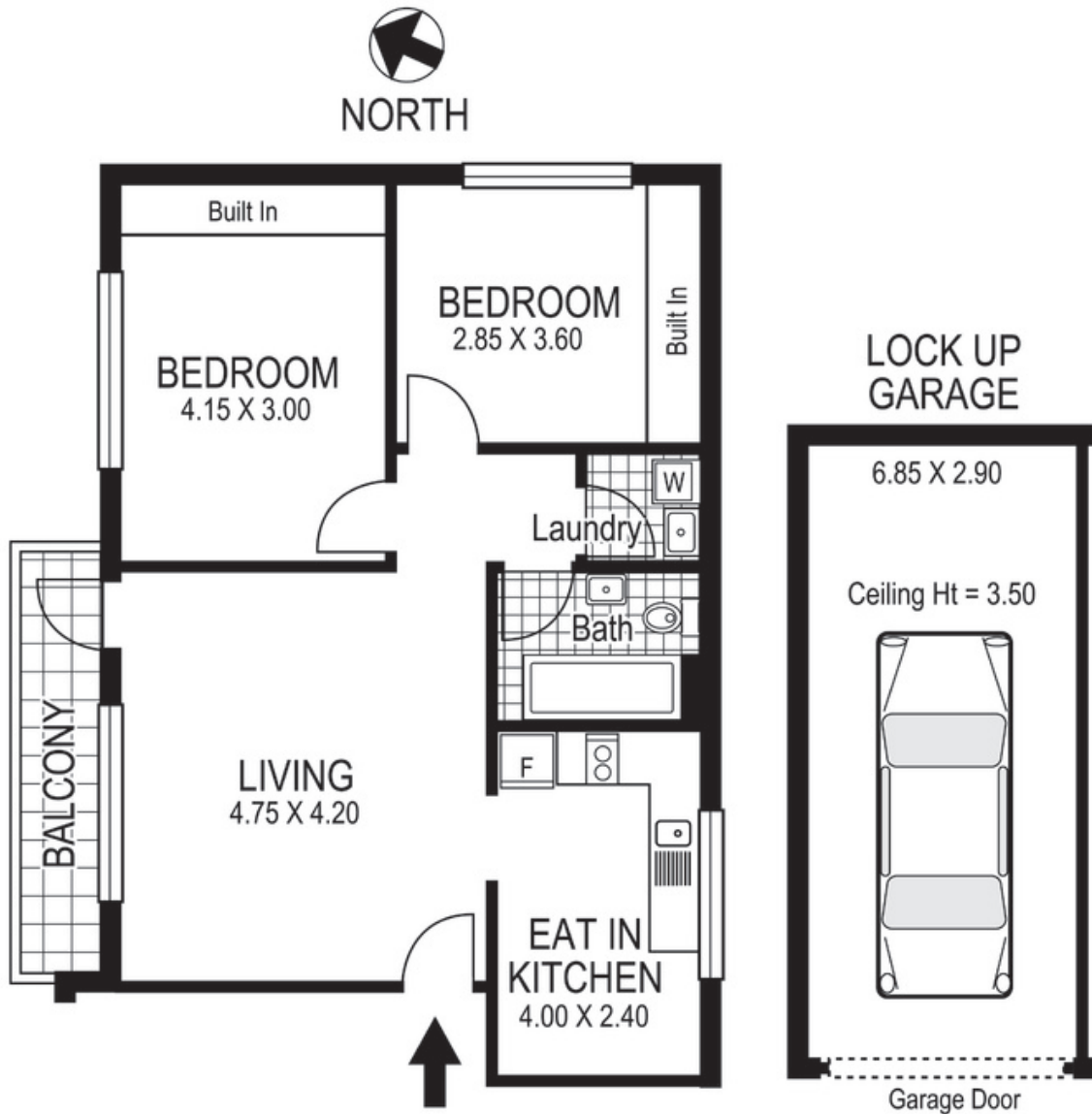
**Proudly Richardson&Wrench**

Richardson & Wrench Elizabeth Bay / Potts Point  
02 8356 2700

**R&W**

Elizabeth Bay / Potts Point  
8356 2700

Contact:  
Rod Angus  
0419 599 888



## 12 / 94 Tenterden Road BOTANY

Plans shown are for presentation purposes only and are not part of any legal document or title and are subject to errors, omissions inaccuracies and they should not be used as the sole and/or accurate reference for purchasing decision. Interested parties should make their own inquiries using other sources supplied. Dimensions in length and width are approximate. Illustration by Raouil Isidro 0411128500

Every precaution has been taken to establish accuracy of the information in this brochure but does not constitute any representation by the vendor or agent.

**R&W**