



## 101/50 Macleay Street POTTS POINT, NSW

1 bed | 1 bath | 1 car

**R&W**

- \* Sleek contemporary interior w fine finishes
- \* Balcony w dual access, from bedroom + living area
- \* Handy underground parking w direct lift access
- \* Quiet bedroom with b/ins + walk-through robe
- \* Chic plantation shutters in bedroom/on balcony
- \* Modern kitchen w integrated dishwasher, Miele stove/oven
- \* Internal laundry facilities positioned in kitchen space
- \* Ducted reverse-cycle air-conditioning throughout
- \* Complex featuring resort style pool, gym, sauna

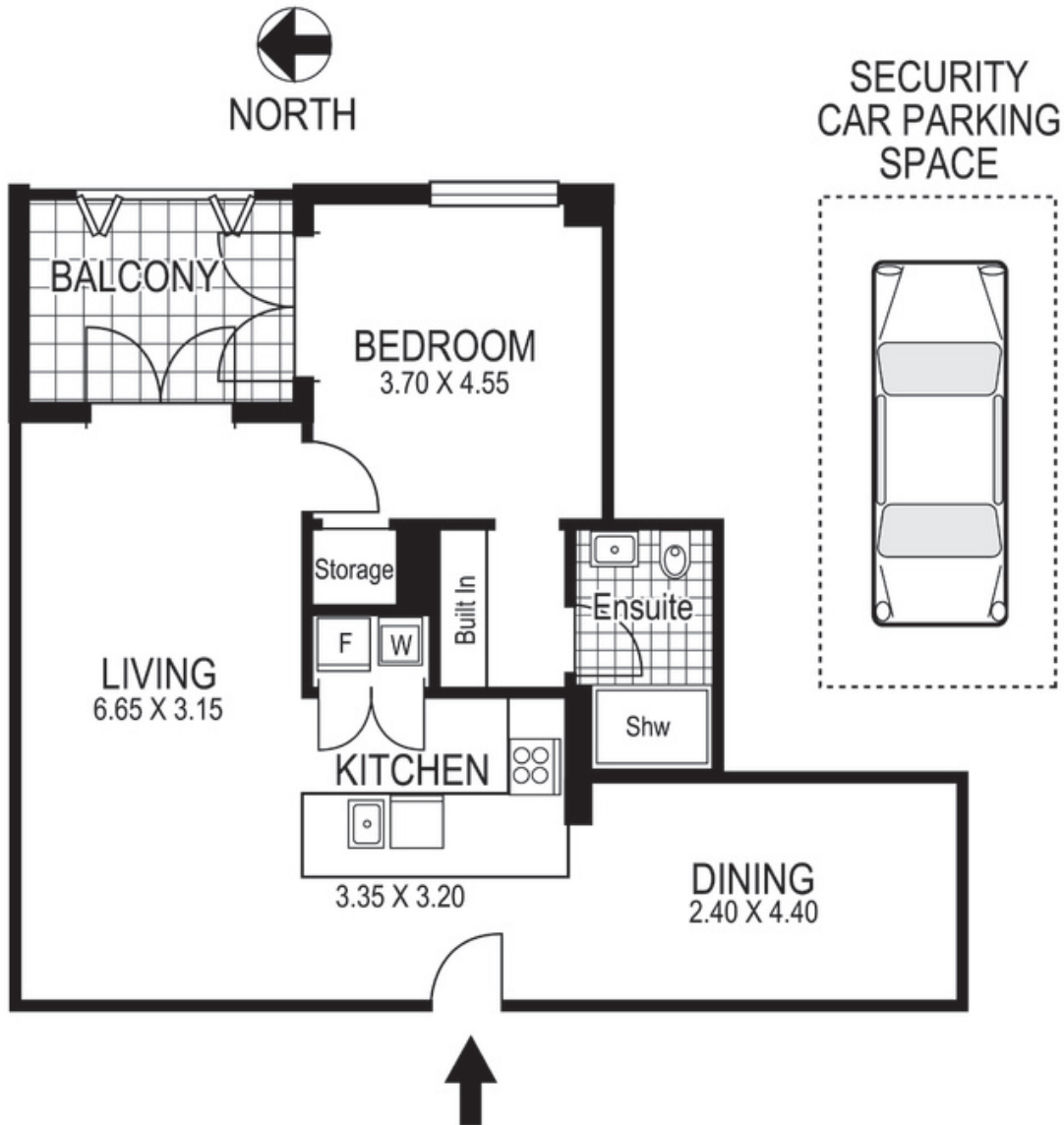
[rwebay.com.au/3765107](http://rwebay.com.au/3765107)

Jason Boon 0418 671 494

Geoff Cox 0418 231 004

**Proudly Richardson&Wrench**

Richardson & Wrench Elizabeth Bay / Potts Point  
02 8356 2700



101 / 50 Macleay Street  
POTTS POINT  
*"THE REX"*

Plans shown are for presentation purposes only and are not part of any legal document or title and are subject to errors, omissions inaccuracies and they should not be used as the sole and/or accurate reference for purchasing decision. Interested parties should make their own inquiries using other sources supplied. Dimensions in length and width are approximate. Illustration by Raoul Isidro 0411128500

Every precaution has been taken to establish accuracy of the information in this brochure but does not constitute any representation by the vendor or agent.