



4/1 Birtley Place ELIZABETH BAY, NSW

2 bed | 1 bath

R&W

- * Serene 1930 company title building, boutique Art Deco style
- * Beautiful entrance w multi-hued porch lined in heritage Vitrolite
- * Wood-panelled foyer, picturesque Deco fittings + lift
- * Bright east-facing living room, capturing the morning sun
- * Main bedroom with dual entry + extensive b/ins
- * Front 2nd bedroom, perfect as kids' room, sunroom, study
- * Cosy 3rd bedroom with handy deep b/ins
- * Massive kitchen, w plenty of bench + cupboard space

rwebay.com.au/3771722

Jason Boon 0418 671 494

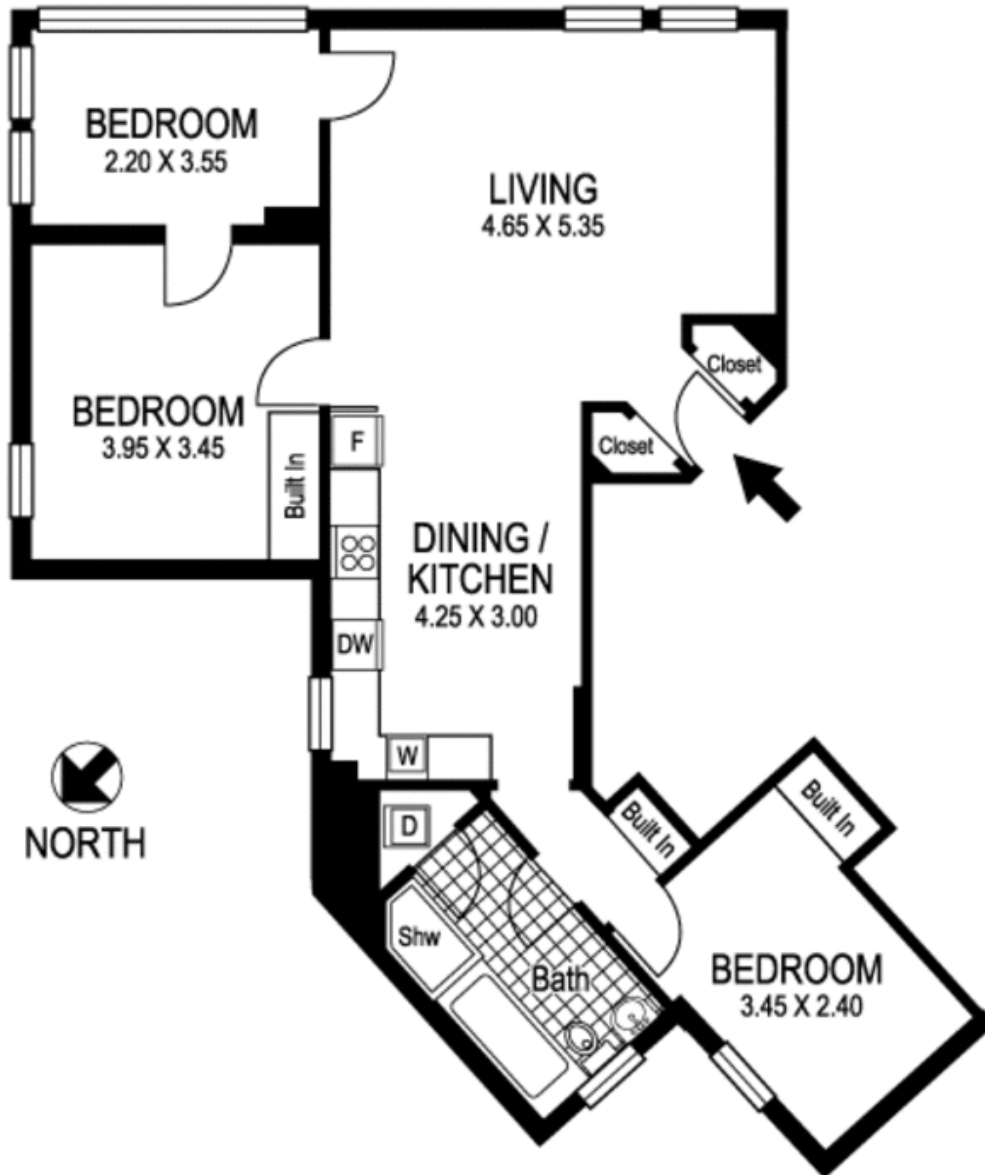
Geoff Cox 0418 231 004

Proudly Richardson&Wrench

Richardson & Wrench Elizabeth Bay / Potts Point
02 8356 2700

R&W

Elizabeth Bay / Potts Point
8356 2700



**4 / 1 Birtley Place
ELIZABETH BAY
"HARLEY"**

Plans shown are for presentation purposes only and are not part of any legal document or title and are subject to errors, omissions inaccuracies and they should not be used as the sole and/or accurate reference for purchasing decision. Interested parties should make their own inquiries using other sources supplied. Dimensions in length and width are approximate. Illustration by Raoul Isidro (0411128500)

Every precaution has been taken to establish accuracy of the information in this brochure but does not constitute any representation by the vendor or agent.

R&W