



10/453 Bourke Street SURRY HILLS, NSW

2 bed | 1 bath | 1 car

R&W

Quietly located in the beautifully maintained Figtree Gardens security development. Spanning over two generously proportioned levels is this spacious two bedroom townhouse style apartment. Contingently located to Surry Hill's cosmopolitan attractions, this particularly tightly held complex is just a stone's throw to cafes, entertainment and shopping.

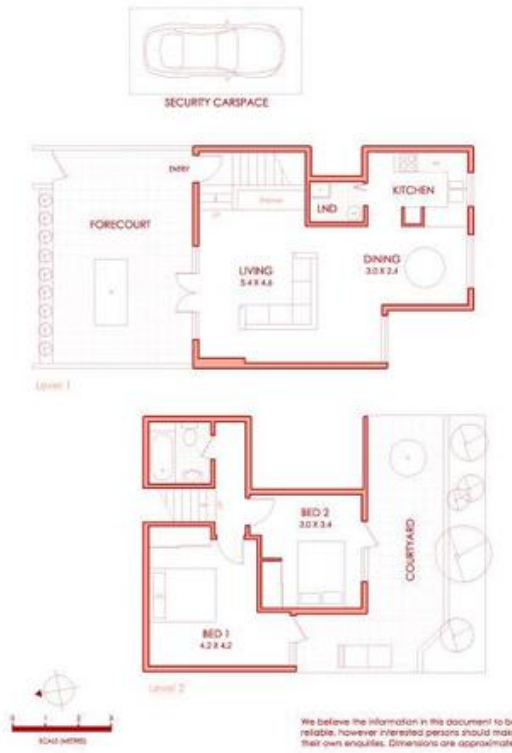
rwebay.com.au/3786675

R&W Leasing 02 8356 2700

Proudly Richardson&Wrench

Richardson & Wrench Elizabeth Bay / Potts Point
02 8356 2700

- ☑ Generous open plan living and dining spaces
- ☑ Two bedrooms with built-in wardrobes



Every precaution has been taken to establish accuracy of the information in this brochure but does not constitute any representation by the vendor or agent.

R&W