



16/29 Roslyn Gardens ELIZABETH BAY, NSW

2 bed | 1 bath | 1 car

R&W

rwebay.com.au/3852602

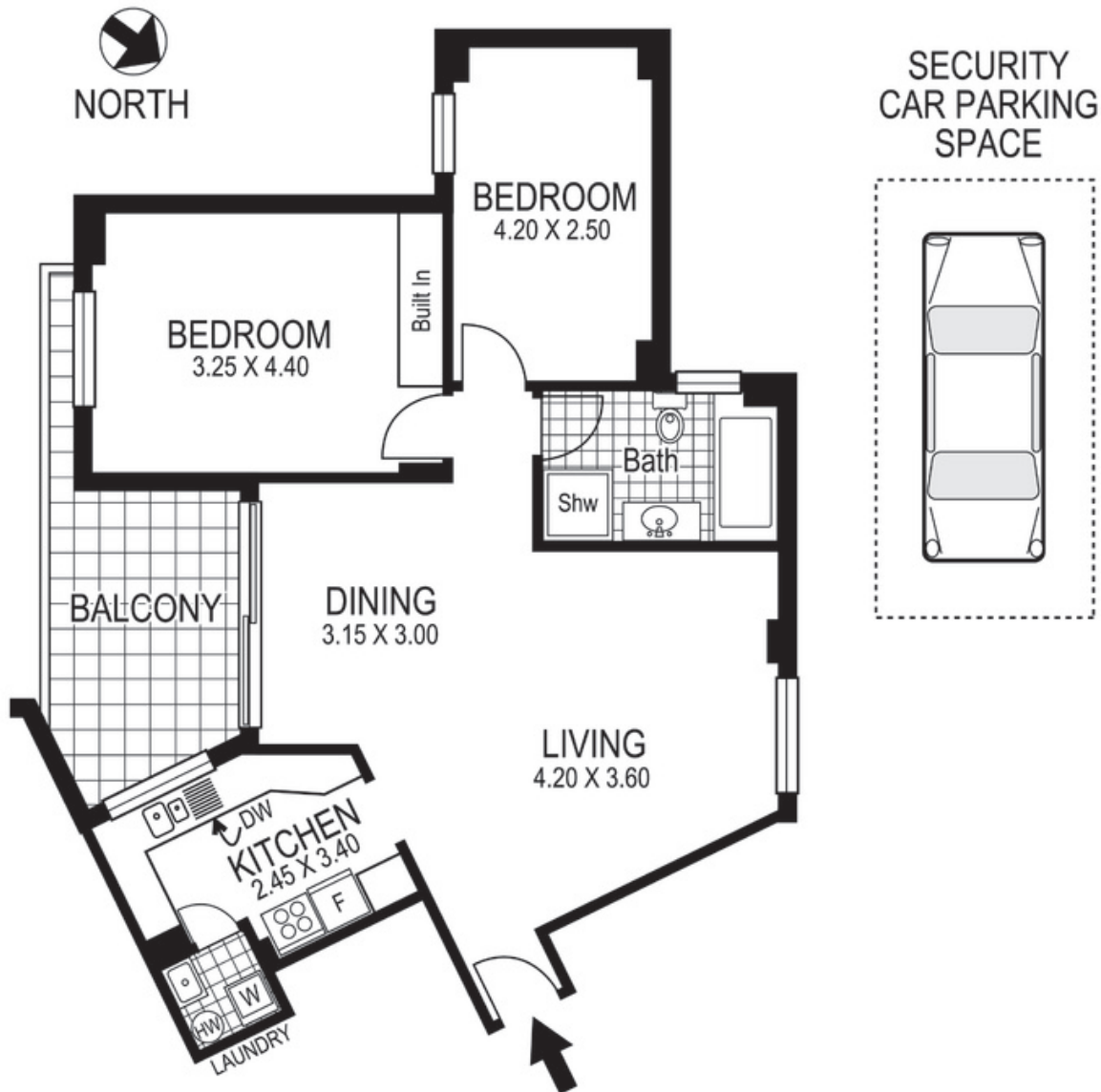
Greg McKinley 0412 044 822

Luke McDonnell 0418 844 110

Proudly Richardson&Wrench

Richardson & Wrench Elizabeth Bay / Potts Point
02 8356 2700

- * Recently updated block with stylish common areas
- * Located on 4th level with direct lift access
- * Dual east-west aspect with east-facing balcony
- * Views to Reg Bartley Oval and Darling Point ridge
- * Spacious kitchen area with adjoining full internal laundry
- * Generous bathroom with separate bath and shower
- * Excellent scope for a tasteful contemporary update
- * Located in popular residential street, close to all amenities



16 / 29-35 Roslyn Gardens
ELIZABETH BAY
"THE PLAZA"

Plans shown are for presentation purposes only and are not part of any legal document or title and are subject to errors, omissions inaccuracies and they should not be used as the sole and/or accurate reference for purchasing decision. Interested parties should make their own inquiries using other sources supplied. Dimensions in length and width are approximate. Illustration by Raoul Isidro 0411128500

Every precaution has been taken to establish accuracy of the information in this brochure but does not constitute any representation by the vendor or agent.