



21/95 Elizabeth Bay Road ELIZABETH BAY, NSW

2 bed | 2 bath | 1 car



- Spectacular North-facing harbour views
- Luxury resort ambience
- Secure undercover lock-up garage, visitor parking
- Ensuite to master bedroom, main bathroom with bath
- Both bedrooms with built-in wardrobes, second bedroom with built-in desk/drawers and shelving
- Internal laundry, air-conditioning, carpeted throughout
- Highly regarded complex, two lifts, gated security grounds

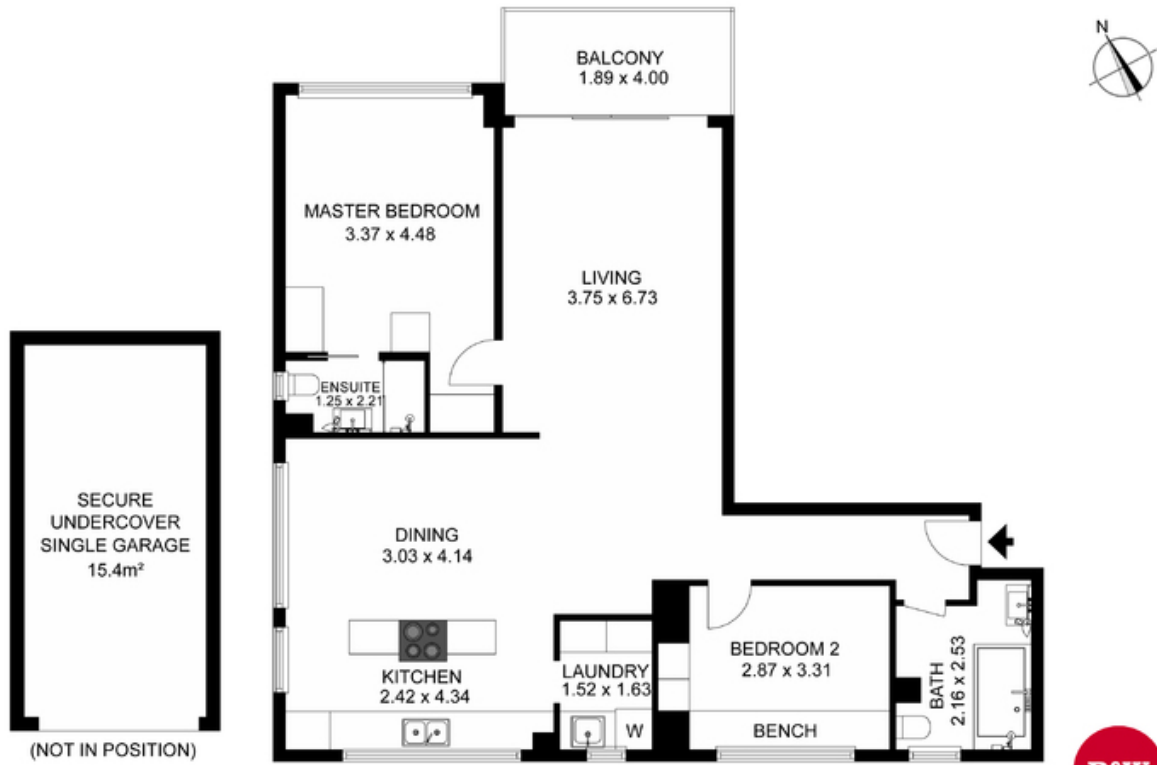
rwebay.com.au/4100449

Penny Timothy 0418 546 500

Greg McKinley 0412 044 822

Proudly Richardson&Wrench

Richardson & Wrench Elizabeth Bay / Potts Point
02 8356 2700



21/95 ELIZABETH BAY ROAD, ELIZABETH BAY

The floor plan is not to scale, measurements are indicative and in metres. Exterior elements are not in position. Plans should not be relied on. Interested parties should make and rely on their own enquiries.