



401/88 Dowling Street WOOLLOOMOOLOO, NSW

3 bed | 2 bath | 2 car

R&W

Elegant and excellent, this deluxe 3-bedroom apartment is a high-end city-side apartment, just seconds from the harbour and enjoying a superb vista across the CBD to the Harbour Bridge. Set in the much-admired Woolloomooloo Waters complex, it stands as a brilliant investment or perfect executive residence, close to the city.

- Superbly appointed, never-to-be-built-out views
- Drenched in sun, length-of-apartment balcony
- To be sold as-is, furniture and fittings included

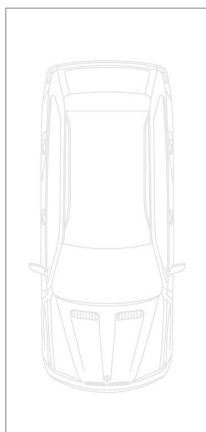
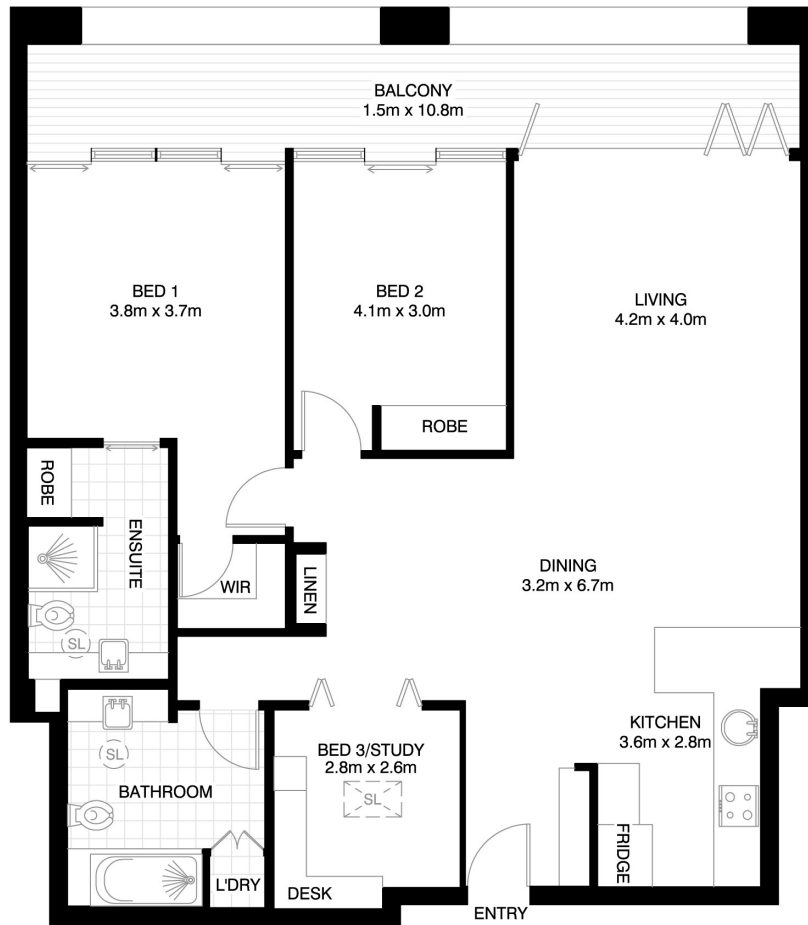
rwebay.com.au/4209783

Geoff Cox 0418 231 004

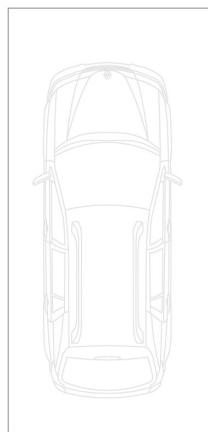
Jason Boon 0418 671 494

Proudly Richardson&Wrench

Richardson & Wrench Elizabeth Bay / Potts Point
02 8356 2700



SECURE CAR SPACE
(NOT ACTUAL LOCATION)



SECURE CAR SPACE
(NOT ACTUAL LOCATION)

WOOLLOOMOOLOO 401/88 DOWLING STREET



*PLANS SHOWN ONLY INDICATIVE OF LAYOUT. DIMENSIONS ARE APPROXIMATE.

Floor plan supplied by V-Mark Design Pty Ltd. This floor plan is provided for indicative purposes only.

Measurements are approximate and not to scale. The vendor, agency and supplier will accept no liability for its accuracy. Interested parties are advised to make their own independent enquiries.