



## 31/16 Macleay Street POTTS POINT, NSW

2 bed | 1 bath

Perfectly positioned on the third floor of the Selsdun building, overlooking tree-lined Macleay Street and Challis Avenue, this large Art Deco strata apartment features expansive views of the city skyline.

Excellent original features include high ceilings, a sunny bay window, French doors, polished timber floors and picture rails.

# R&W

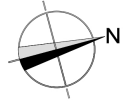
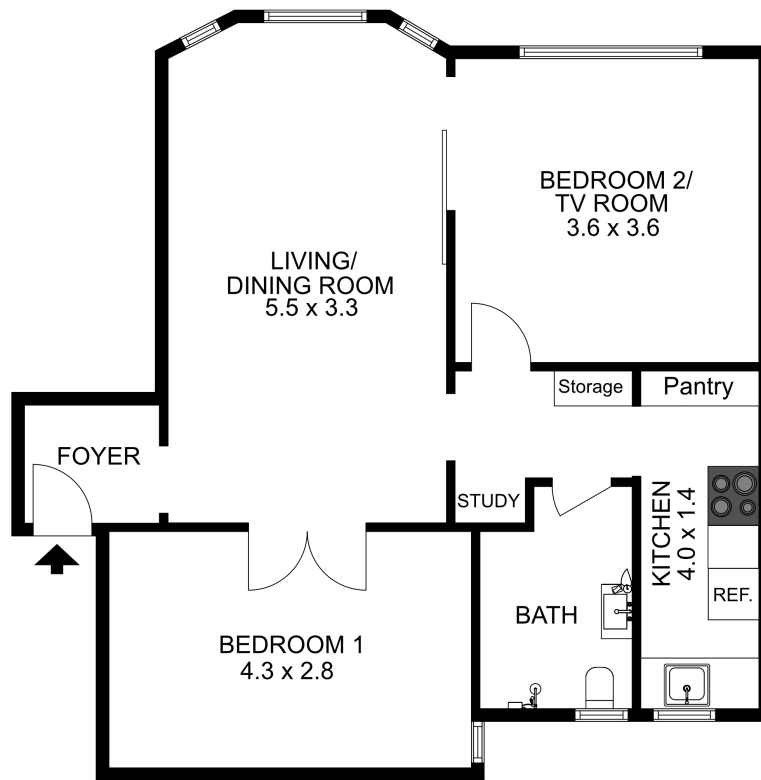
[rwebay.com.au/4375450](http://rwebay.com.au/4375450)

Penny Timothy 0418 546 500

Jason Boon 0418 671 494

**Proudly Richardson&Wrench**

Richardson & Wrench Elizabeth Bay / Potts Point  
02 8356 2700



### 31/16 MACLEAY STREET, POTTS POINT

The floor plan is not to scale; measurements are indicative and in metres. Exterior elements are not in position. Plans should not be relied on. Interested parties should make and rely on their own enquiries.

Every precaution has been taken to establish accuracy of the information in this brochure but does not constitute any representation by the vendor or agent.

