



## 20/6a Greenknowe Avenue ELIZABETH BAY, NSW

2 bed | 1 bath

**R&W**

A lovely quiet haven in a prized Art Deco block, this 2-bed residence offers elegant living in a coveted location. Set in "Onslow Gardens", a premiere example of Potts Point Deco style, it also features a sunlit living and dining area plus modern kitchen and bathroom. With sunny westerly orientation and smart modern touches on a heritage canvas, this is a superbly tasteful home.

- Updated throughout w retained Deco touches adding elegance

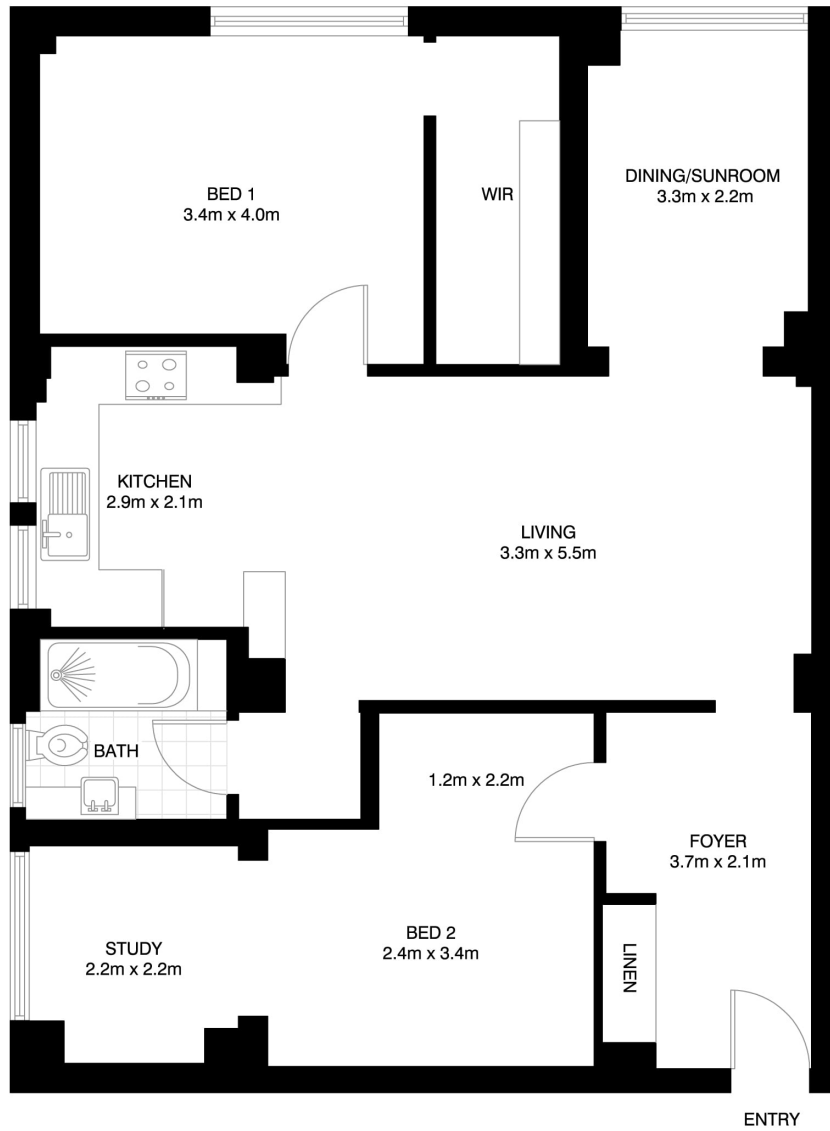
[rwebay.com.au/4387593](https://rwebay.com.au/4387593)

Jason Boon 0418 671 494

Geoff Cox 0418 231 004

**Proudly Richardson&Wrench**

Richardson & Wrench Elizabeth Bay / Potts Point  
02 8356 2700



**ELIZAETH BAY**  
**20/6A GREENKNOWE AVENUE**  
\*INTERNAL FLOOR AREA APPROX 84m<sup>2</sup>



\*PLANS SHOWN ONLY INDICATIVE OF LAYOUT. DIMENSIONS ARE APPROXIMATE.  
Floor plan supplied by V-Mark Design Pty Ltd. This floor plan is provided for indicative purposes only.  
Measurements are approximate and not to scale. The vendor, agency and supplier will accept no liability for its accuracy. Interested parties are advised to make their own independent enquiries.