



3/29-35 Roslyn Gardens ELIZABETH BAY, NSW

2 bed | 1 bath | 1 car

R&W

Strata 2brm (approx 85m²) in the 'Plaza'. Only moments to Rushcutters Bay Park and Harbour. Considerable scope for a modern update. East facing living & balcony. Parking. Superb chance to live in a coveted locale

rwebay.com.au/4400885

Andrew Hoggett 0412 208 614

Greg McKinley 0412 044 822

Proudly Richardson&Wrench

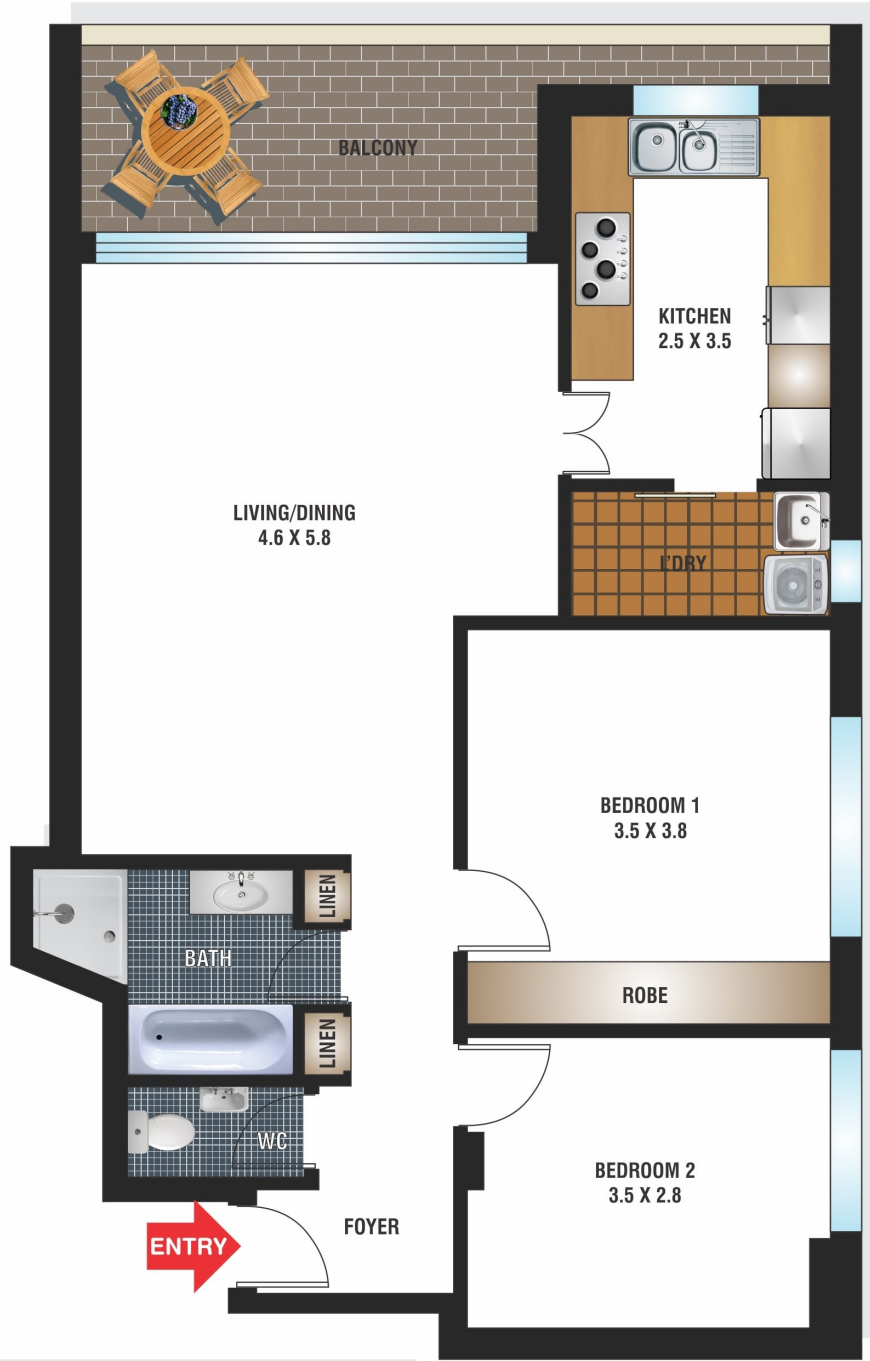
Richardson & Wrench Elizabeth Bay / Potts Point
02 8356 2700

- ? Recently updated security building / Level lift access
- ? Generous living / dining with Easterly aspect
- ? Large kitchen with separate laundry area
- ? Main bedroom with built ins.
- ? Generous sized bathroom with bath/shower recess and separate WC
- ? Undercover security car space. Modern common areas. ...



Elizabeth Bay
TEL: 02 8356 2700

3/29 Roslyn Gardens
ELIZABETH BAY



FLOOR PLAN BY BORTEX PTY LTD PH: 0414 922 679

"The information contained herein has been provided by our Principal and third parties, which we merely pass on without any representation or warranty given, intended or implied by us as to its correctness and with no liability accepted by us in this regard. You must rely on your own inquiries as to its accuracy or otherwise."

Every precaution has been taken to establish accuracy of the information in this brochure but does not constitute any representation by the vendor or agent.

