



## 4/679 Bourke Street SURRY HILLS, NSW

| 1 bath | 1 car

This studio apartment located in the immaculately maintained "Glenview Park Apartments" offers modern practical living or an ideal investment with a strong rental return of \$335 per week.

Features include: Spacious practical layout (approx 32m2), East facing ground floor position overlooking manicured gardens; Large separate renovated kitchen, ample bench and cupboard space, oversize bathroom with bath and internal laundry facilities; Security car space with convenient level access and common roof top area with stunning views of the city skyline.

...

# R&W

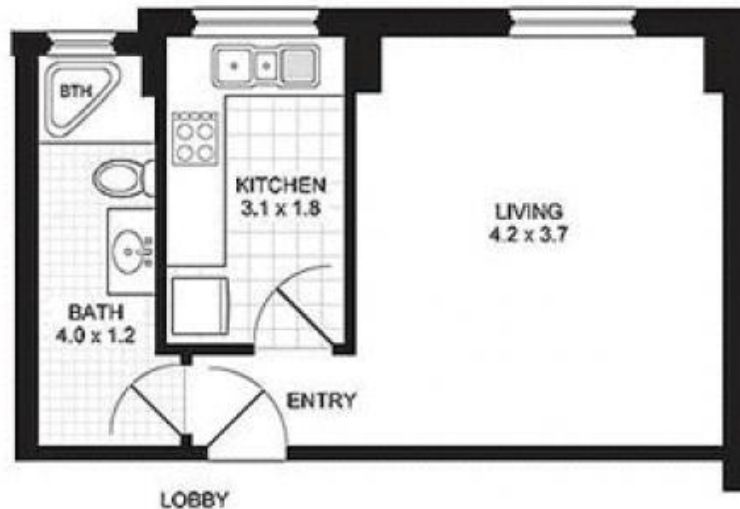
**[rwebay.com.au/460590](http://rwebay.com.au/460590)**

Luke McDonnell 0418 844 110

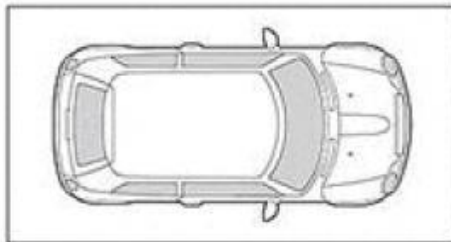
**Proudly Richardson&Wrench**

Richardson & Wrench Elizabeth Bay / Potts Point  
02 8356 2700

## APARTMENT 4/679 BOURKE STREET SURRY HILLS



FLOOR PLAN



CAR SPACE



**PROMOPLANS ...adding REAL value!**

ES&OE This plan is for illustrative purposes only and dimensions are approximate. It does not constitute part of any legal document or commercial contract for the sale or lease of this property.  
COPYRIGHT © 2011 PROMOPLANS 02 9572 7111  
Warning: Usage restricted under the Copyright Act

**CONTACT:**

Geoff Cox  
Phone 8356 2734 Mobile 0418 231 004  
Email [geoff@rwebay.com.au](mailto:geoff@rwebay.com.au)

Luke McDonnell  
Phone 8356 2700 Mobile 0418 844 110  
Email [lmcdonnell@rwebay.com.au](mailto:lmcdonnell@rwebay.com.au)

**R&W** Elizabeth Bay  
Potts Point