



C704/2a Elizabeth Bay Road POTTS POINT, NSW

1 bed | 1 bath | 1 car

R&W

Features include;

- Freshly painted with new carpet
- East facing
- Kitchen with gas cooking
- All white modern bathroom
- Large Bedroom with built-in
- Separate study / guest room
- Internal laundry
- Full access to spa, gym, sauna and pool in building

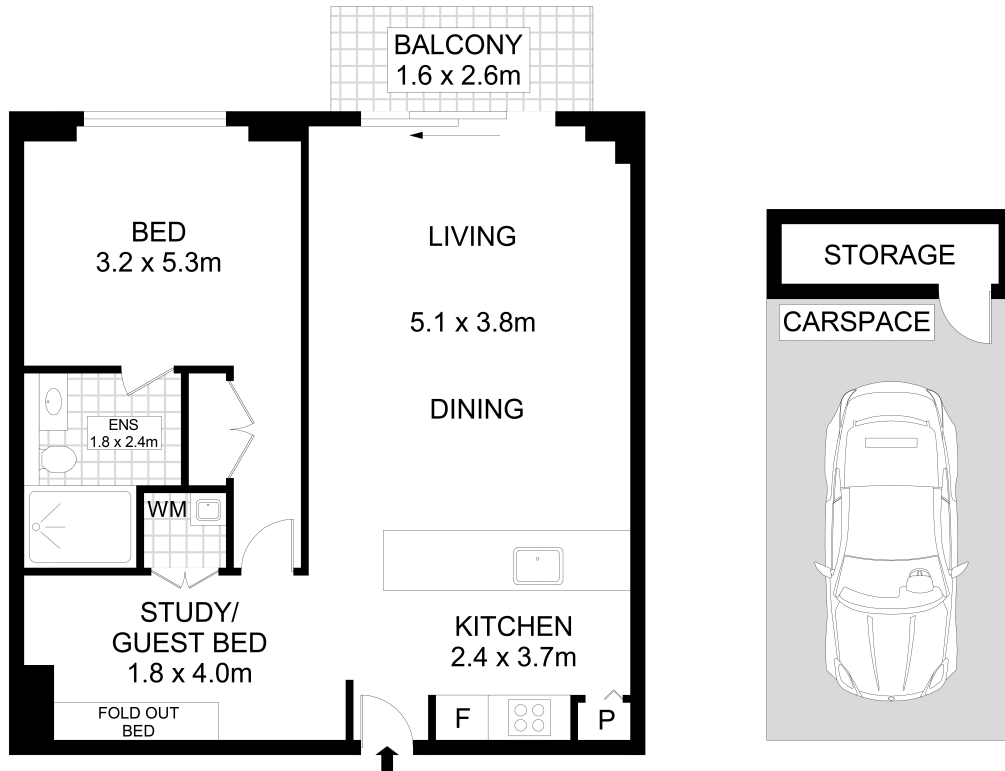
rwebay.com.au/4857727

Joss Reid 0414 662 391

R&W Leasing 02 8356 2700

Proudly Richardson&Wrench

Richardson & Wrench Elizabeth Bay / Potts Point
02 8356 2700



704/2A Elizabeth Bay Rd, Elizabeth Bay



Disclaimer

Floor Plan measurements are approximate and are for illustrative purposes only. While we cannot doubt the floor plans accuracy, we make no guarantee, warranty or representation as to the accuracy and completeness of the floor plan