



81 Victoria Street POTTS POINT, NSW

3 bed | 2 bath | 1 car

- Magnificent 3-bedroom Victorian heritage terrace, superb condition
- Comprehensively renovated to meticulous specifications throughout
- Wonderful main living area, formal dining room, superb gas kitchen
- Grand main bedroom, extensive b/ins, private terrace + full en-suite
- Sun-bathed 2nd bed w b/ins + terrace, private lower level bedroom
- Main bathroom w full clawfoot bath, gas kitchen w Sme...

R&W

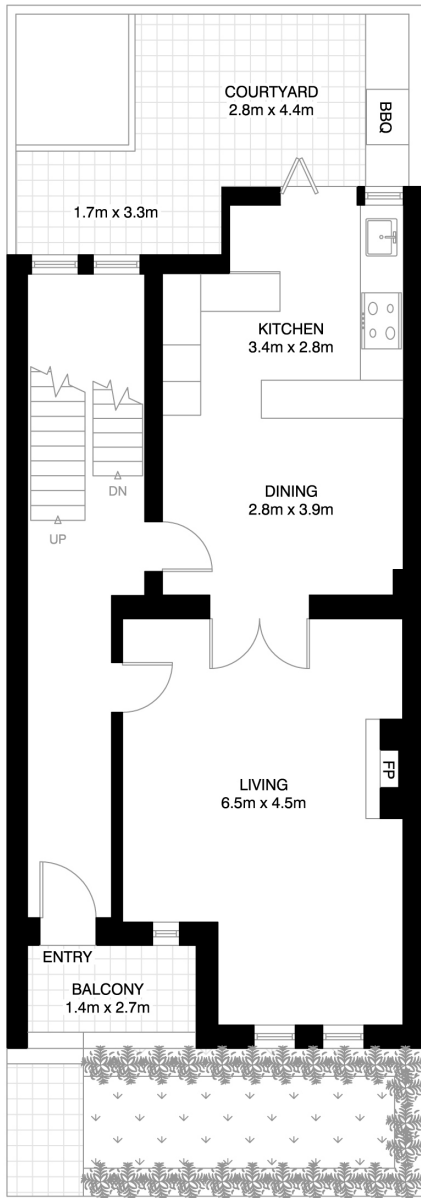
rwebay.com.au/5032814

Jason Boon 0418 671 494

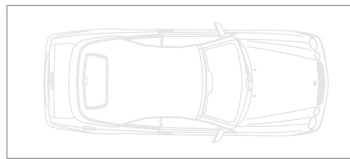
Geoff Cox 0418 231 004

Proudly Richardson&Wrench

Richardson & Wrench Elizabeth Bay / Potts Point
02 8356 2700



GROUND FLOOR



CAR SPACE
(NOT ACTUAL LOCATION)

POTTS POINT 81 VICTORIA STREET

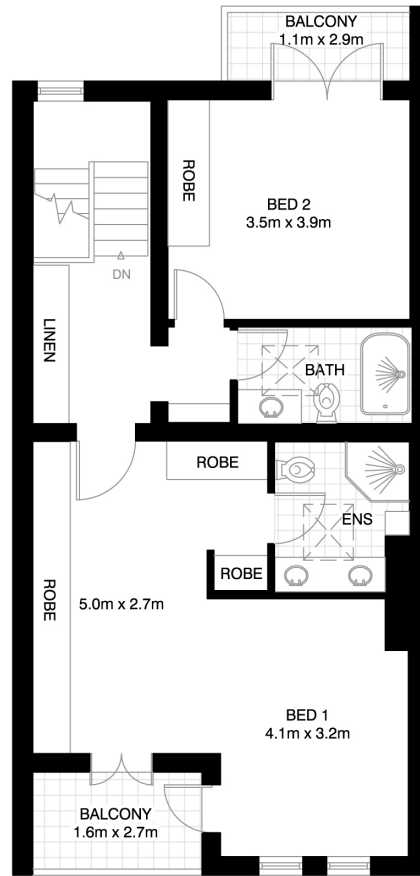
*INTERNAL FLOOR AREA APPROX 190m²



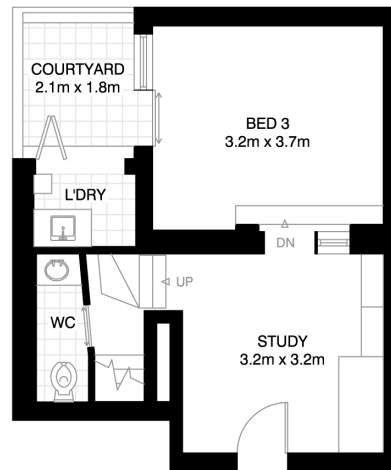
SCALE (METRES)

R&W

Elizabeth Bay / Potts Point
8356 2700



FIRST FLOOR



UNDER HOUSE ACCESS

LOWER GROUND FLOOR

*PLANS SHOWN ONLY INDICATIVE OF LAYOUT. DIMENSIONS ARE APPROXIMATE.

Floor plan supplied by V-Mark Design Pty Ltd. This floor plan is provided for indicative purposes only.

Measurements are approximate and not to scale. The vendor, agency and supplier will accept no liability for its accuracy. Interested parties are advised to make their own independent enquiries.

Every precaution has been taken to establish accuracy of the information in this brochure but does not constitute any representation by the vendor or agent.

R&W