



## 1803/3 Kings Cross Road RUSHCUTTERS BAY, NSW

1 bed | 1 bath | 2 car

**R&W**

- Private 1-bed sub-penthouse in acclaimed 'Altair', great views
- On 18th floor, no common walls or neighbouring apartments
- Private apartment-wide terrace, sweeping views, peaceful space
- Generous carpeted bedroom, large walk-in robe, terrace access
- Luxury sunny living area, floor to ceiling glass doors to terrace
- Smeg gas kitchen, s/steel benches, superb cabinetry, int. laundry

[rwebay.com.au/5040673](http://rwebay.com.au/5040673)

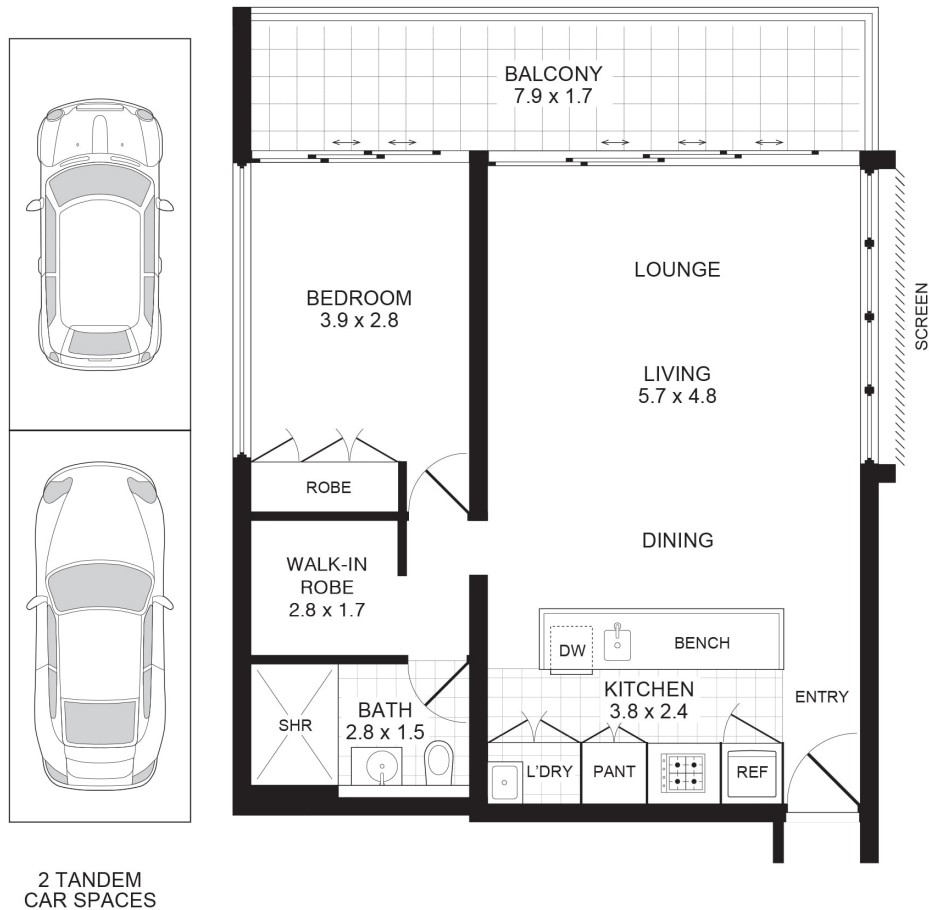
Jason Boon 0418 671 494

Geoff Cox 0418 231 004

**Proudly Richardson&Wrench**

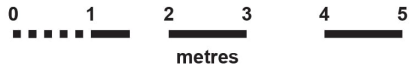
Richardson & Wrench Elizabeth Bay / Potts Point  
02 8356 2700

# APARTMENT 1803/3 KINGS CROSS ROAD POTTS POINT



**BASEMENT**

**FLOOR PLAN**



**Contact**

**Jason Boon**  
Phone: 8356 2700 Mobile: 0418 671 494  
Email: jboon@rwebay.com.au

**Geoff Cox**  
Phone: 8356 2734 Mobile: 0418 231 004  
Email: gcox@rwebay.com.au



Elizabeth Bay / Potts Point  
8356 2700

**PROMOPLANS ...adding REAL value!**  
E&OE This plan is for illustrative purposes only and dimensions are approximate. It does not constitute part of any legal document or commercial contract for the sale or lease of this property.  
**COPYRIGHT © 2013 PROMOPLANS 02 9572 7111**  
Warning: Usage restricted under the Copyright Act

