



29/40 Victoria Street POTTS POINT, NSW

| 1 bath

R&W

A picture-perfect first home or Sydney apartment in a prime location.

- ☑ One of only 2 courtyard apartments in the 'Gemini' building
- ☑ 2.7m ceiling height in living area
- ☑ 44m² on title
- ☑ Rare outdoor space
- ☑ Private entrance from McDonald Lane to courtyard
- ☑ City skyline views

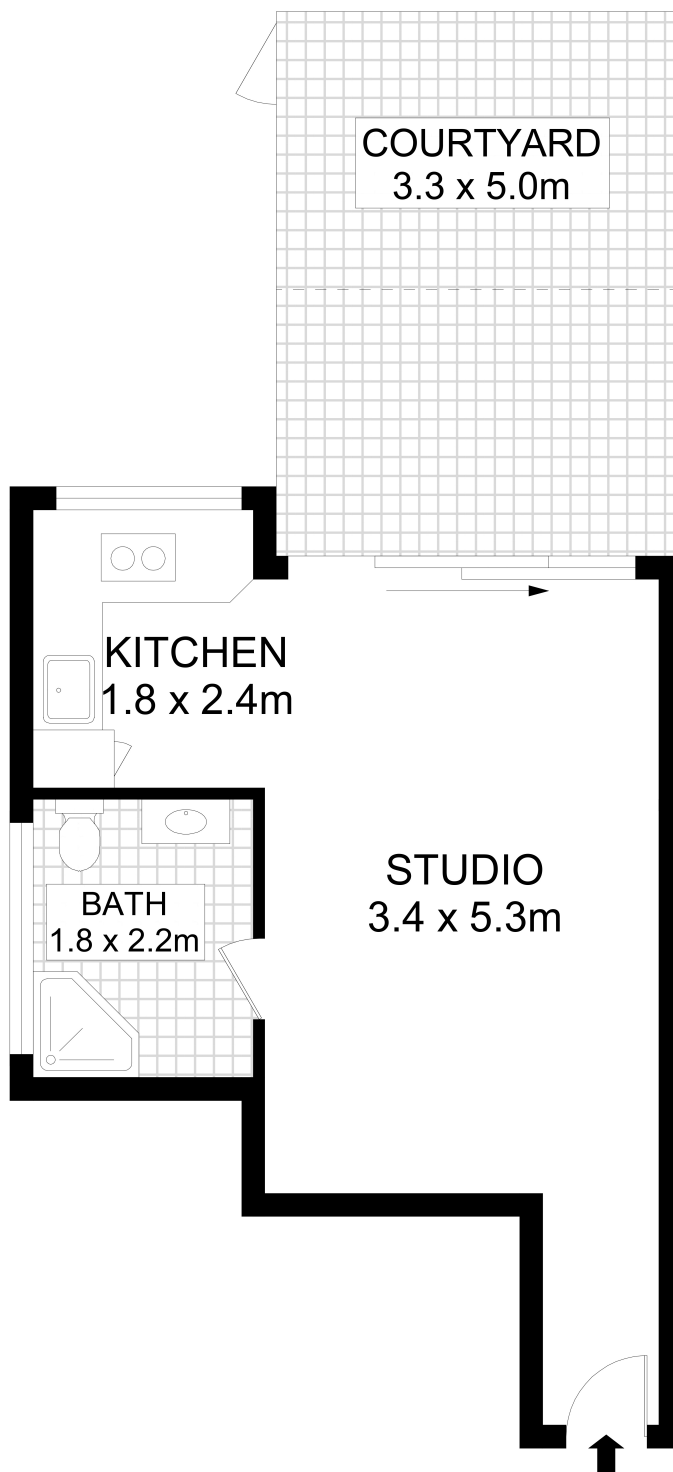
rwebay.com.au/5106554

Penny Timothy 0418 546 500

Luke McDonnell 0418 844 110

Proudly Richardson&Wrench

Richardson & Wrench Elizabeth Bay / Potts Point
02 8356 2700



29/40 Victoria Street, Potts Point

Disclaimer

Floor Plan measurements are approximate and are for illustrative purposes only. While we cannot doubt the floor plans accuracy, we make no guarantee, warranty or representation as to the accuracy and completeness of the floor plan

Every precaution has been taken to establish accuracy of the information in this brochure but does not constitute any representation by the vendor or agent.

