



## 8/85 Boundary Street DARLINGHURST, NSW

2 bed | 2 bath

**R&W**

- Excellent 2-bedroom home in handy Darlinghurst enclave
- Set over 2 levels, great floorplan maximising light, views
- Sunny NE-facing terrace with district views to Darling Point
- Peaceful master bedroom w large b/ins, carpet, great outlook
- 2nd bed w b/ins, lower bathroom, laundry, under-stair storage
- Spacious kitchen with Smeg gas cooking, d/washer, views
- Relaxed living area, tiered skylight windows, f/boards, fan
- Large dining/2nd living area, upper tiled bathroom, sep WC
- Convenient position, caf?s at doorstep, fine eateries nearby

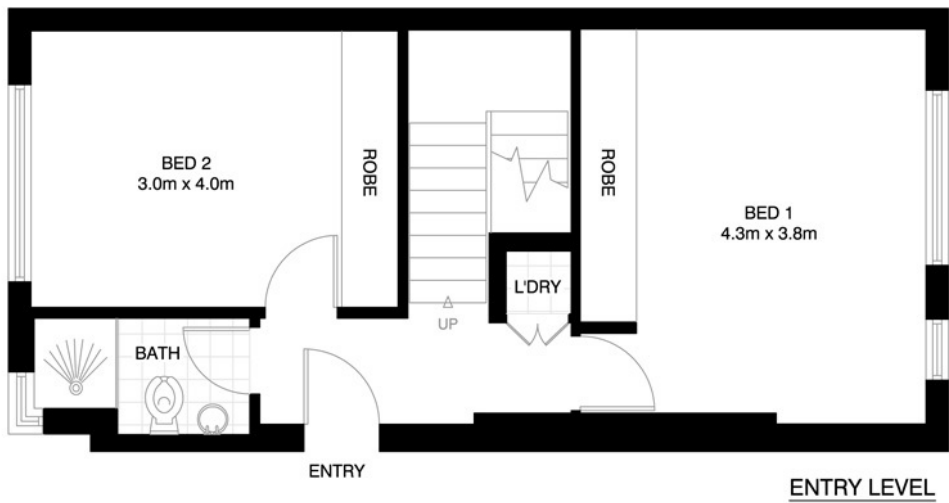
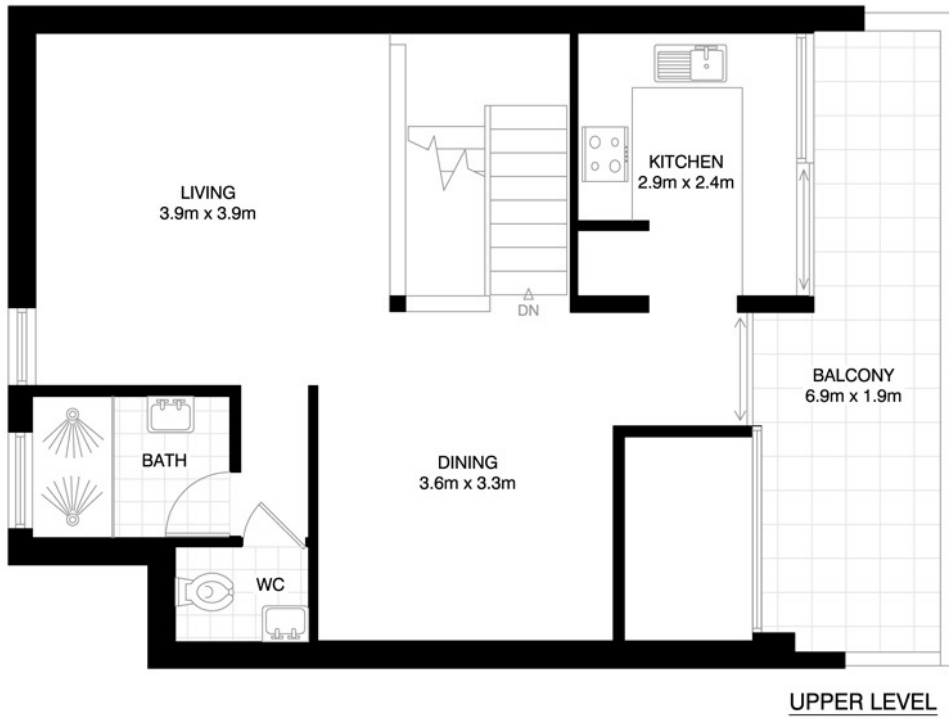
[rwebay.com.au/5898081](http://rwebay.com.au/5898081)

Jason Boon 0418 671 494

Geoff Cox 0418 231 004

**Proudly Richardson&Wrench**

Richardson & Wrench Elizabeth Bay / Potts Point  
02 8356 2700



## DARLINGHURST 8/85 BOUNDARY STREET



\*PLANS SHOWN ONLY INDICATIVE OF LAYOUT. DIMENSIONS ARE APPROXIMATE.  
Floor plan supplied by V-Mark Design Pty Ltd. This floor plan is provided for indicative purposes only.  
Measurements are approximate and not to scale. The vendor, agency and supplier will accept no liability for its accuracy. Interested parties are advised to make their own independent enquiries.

Every precaution has been taken to establish accuracy of the information in this brochure but does not constitute any representation by the vendor or agent.

