



22 Narelle Street NORTH BONDI, NSW

3 bed | 1 bath

A remarkable opportunity in the one of the most tightly held streets in North Bondi, this much-loved family home stands in a prime position in this enviable neighbourhood pocket. With 3 bedrooms and set on a large block with generous front and back yards, this deceased estate offers a significant opportunity in one of Sydney's most-desired suburbs, a quick trip to the beach and in an area celebrated for its family-friendly atmosphere.

Set over a total of 3 levels, it represents a rare pros...

R&W

rwebay.com.au/6249308

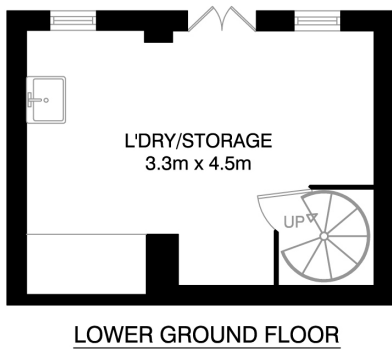
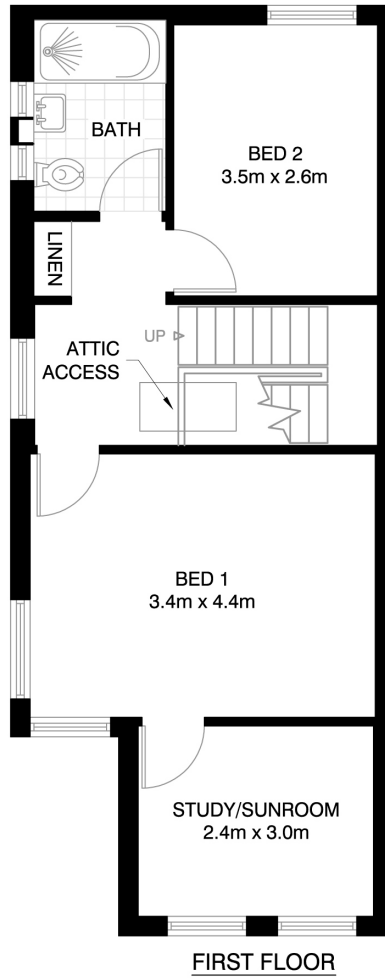
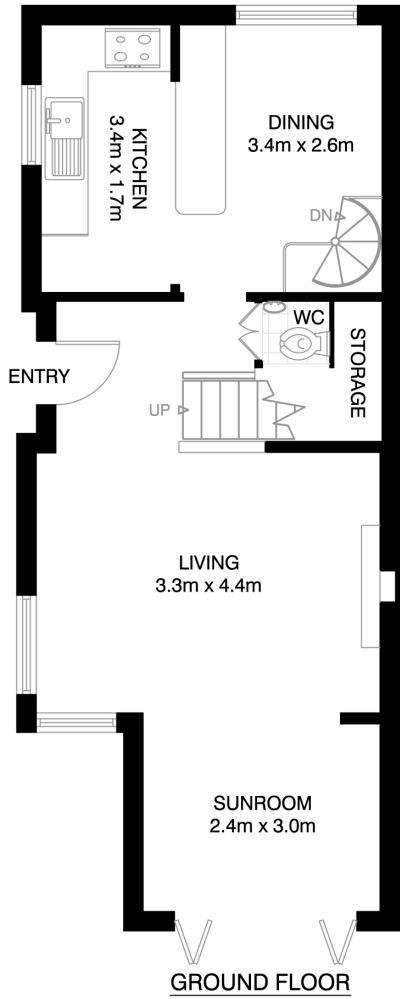
Jason Boon 0418 671 494

Stewart Cahn 0405 345 767

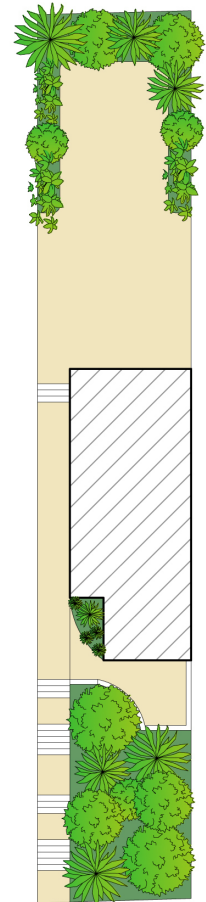
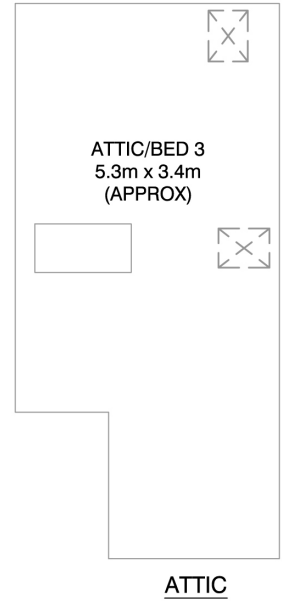
Geoff Cox 0418 231 004

Proudly Richardson&Wrench

Richardson & Wrench Elizabeth Bay / Potts Point
02 8356 2700



NORTH BONDI
22 NARELLE STREET
*INTERNAL FLOOR AREA APPROX 130m²
INCL ATTIC



*PLANS SHOWN ONLY INDICATIVE OF LAYOUT. DIMENSIONS ARE APPROXIMATE.

Floor plan supplied by V-Mark Design Pty Ltd. This floor plan is provided for indicative purposes only.

Measurements are approximate and not to scale. The vendor, agency and supplier will accept no liability for its accuracy. Interested parties are advised to make their own independent enquiries.