



6/10 Hardie Street DARLINGHURST, NSW

2 bed | 1 bath

Set upstairs on Level 1 of this most impressive neo-classical building The Savoy, designed by renowned architect Claude Hamilton in 1919, this spacious two bedroom apartment is beautifully appointed.

The soaring ceilings of the large living room lead out to a light filled study / sunroom and wide private balcony. Both bedrooms feature elegant sash windows and deep window sills with a built-in wardrobe in the main bedroom. The bathroom features a luxurious clawfoot bath and separate shower. The gas kitchen has excellent storage, integrated Liebh...

R&W

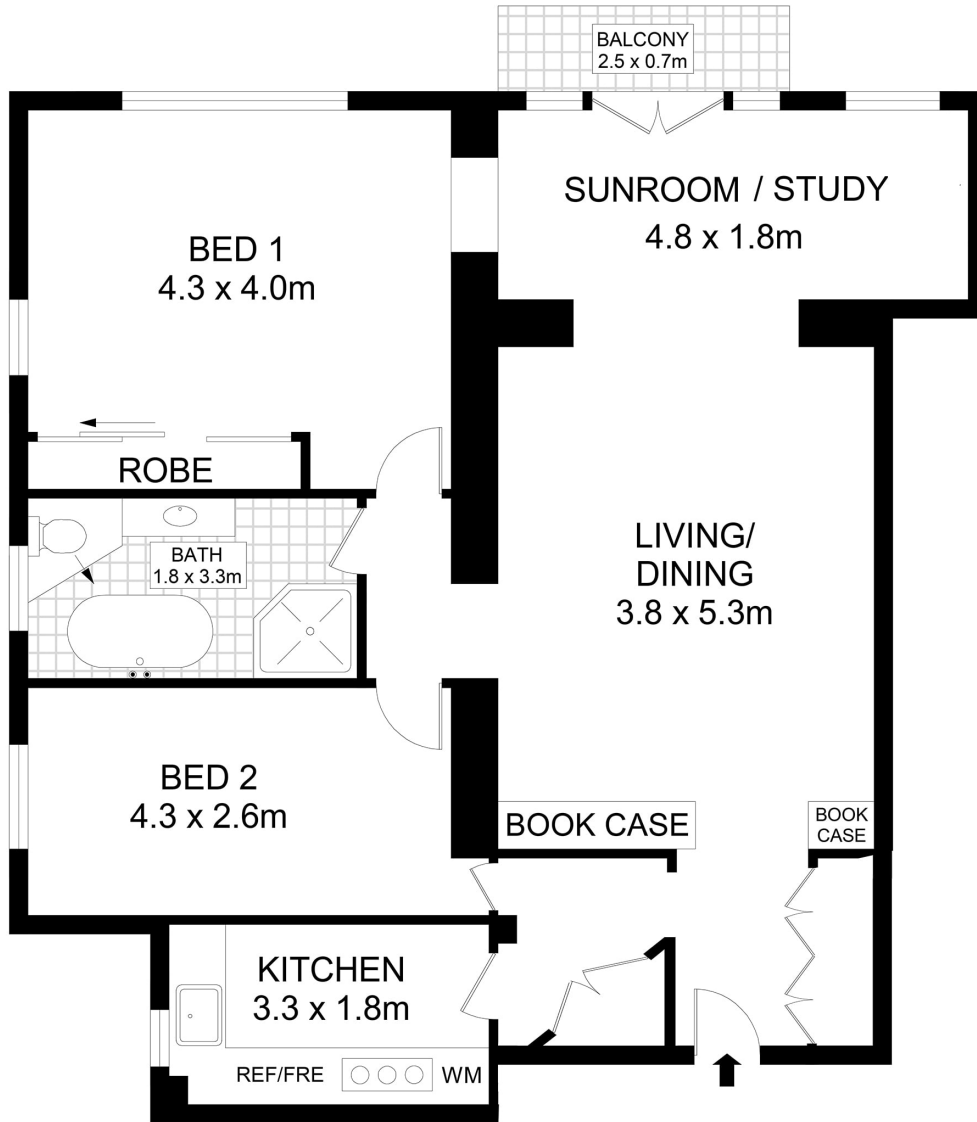
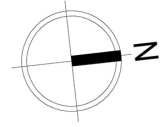
rwebay.com.au/6312375

Penny Timothy 0418 546 500

Greg McKinley 0412 044 822

Proudly Richardson&Wrench

Richardson & Wrench Elizabeth Bay / Potts Point
02 8356 2700



6/10 Hardie Street, Darlinghurst



Disclaimer

Floor Plan measurements are approximate and are for illustrative purposes only. While we cannot doubt the floor plans accuracy, we make no guarantee, warranty or representation as to the accuracy and completeness of the floor plan.

Every precaution has been taken to establish accuracy of the information in this brochure but does not constitute any representation by the vendor or agent.

