



## 9/65-69 Belgrave Street BRONTE, NSW

2 bed | 1 bath | 1 car

**R&W**

Dreaming of an ocean vista? Then you'll want to stand at your double kitchen sink all day mesmerised by the vast horizon outside. Of course, cooking will also be a dream in your elegant kitchen with ergonomically raised stone bench tops allowing for maximum storage below and fully concealed dedicated Laundry nook. With a masterful floor plan truly integrating open plan living at its best, each zone in the lounge / dining and kitchen area is well proportioned belying its size, and opens out to an east facing entertainer's balcony.

Equally impressive, is the sense of space in both north...

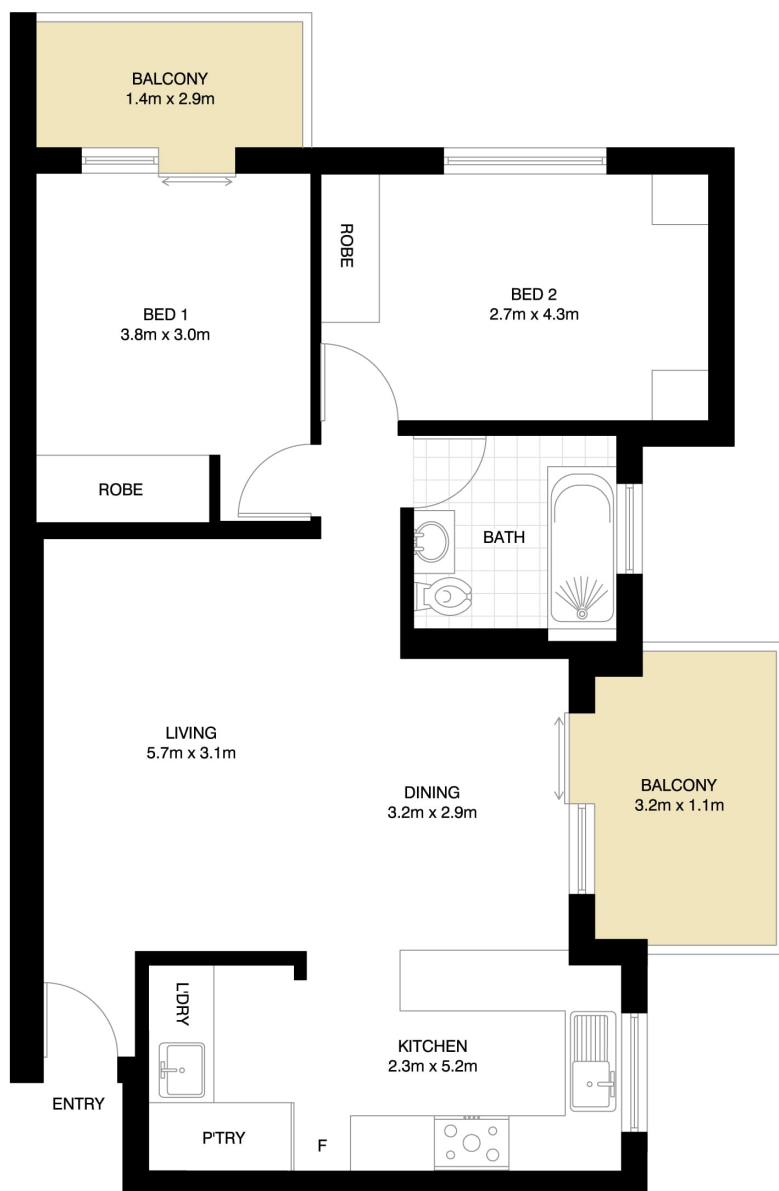
[rwebay.com.au/6314845](http://rwebay.com.au/6314845)

Jason Boon 0418 671 494

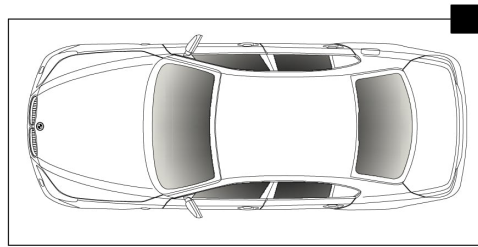
Geoff Cox 0418 231 004

**Proudly Richardson&Wrench**

Richardson & Wrench Elizabeth Bay / Potts Point  
02 8356 2700



**BRONTE**  
9/65 BELGRAVE STREET



SECURE COVERED CAR SPACE  
5.3m x 2.5m  
(NOT ACTUAL LOACTION)



\*PLANS SHOWN ONLY INDICATIVE OF LAYOUT. DIMENSIONS ARE APPROXIMATE.  
Floor plan supplied by V-Mark Design Pty Ltd. This floor plan is provided for indicative purposes only.  
Measurements are approximate and not to scale. The vendor, agency and supplier will accept no liability for its accuracy. Interested parties are advised to make their own independent enquiries.