



## 8/15 Billyard Avenue ELIZABETH BAY, NSW

2 bed | 2 bath

Gazing directly over the waters of Elizabeth Bay and across Sydney Harbour, a beautiful harbourside lifestyle awaits in this gracious 2-bedroom sanctuary. Set high in the gorgeous 'Clanricarde' building on dress circle Billyard Ave, it blends expansive interiors with period details to present as a lovely home in one of Sydney's most exclusive enclaves.

Positioned high on the 3rd level of this immaculate blo...

# R&W

[rwebay.com.au/6353333](http://rwebay.com.au/6353333)

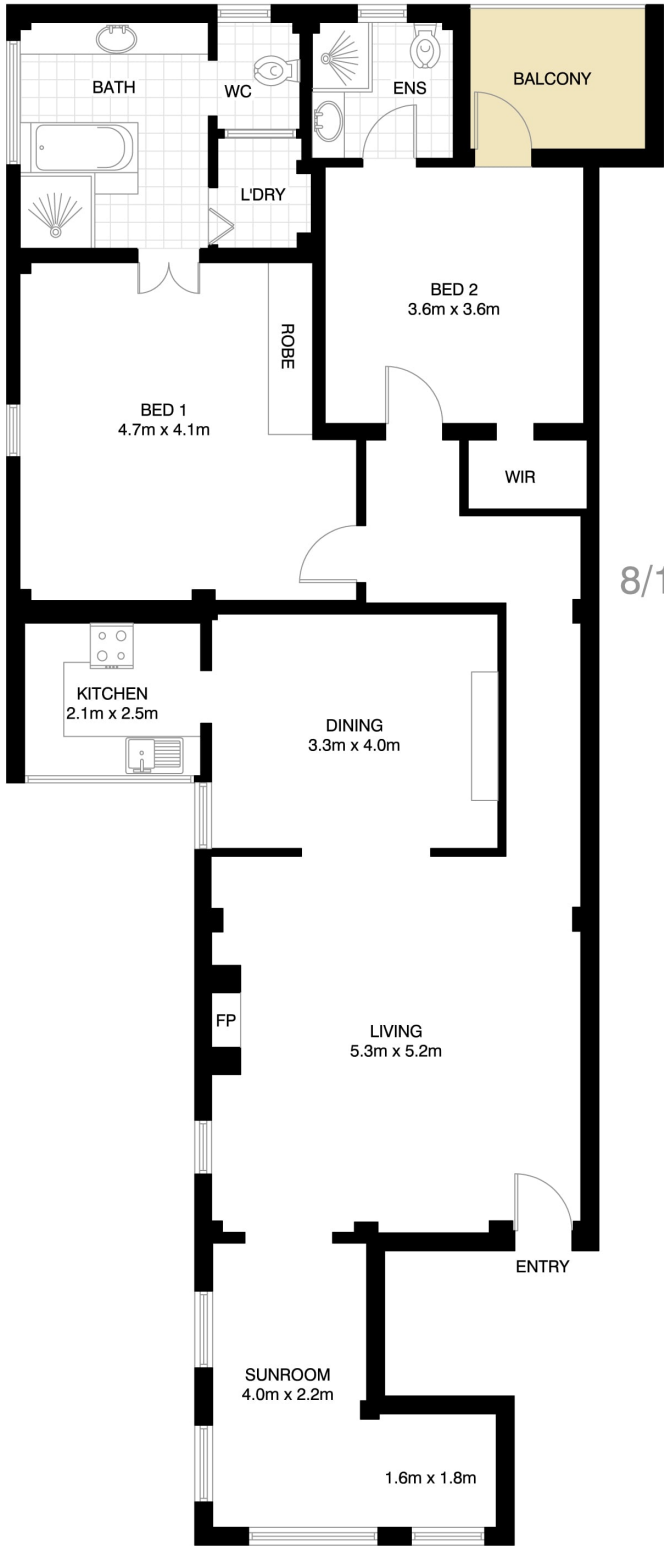
Jason Boon 0418 671 494

Geoff Cox 0418 231 004

Joss Reid 0414 662 391

**Proudly Richardson & Wrench**

Richardson & Wrench Elizabeth Bay / Potts Point  
02 8356 2700



**ELIZABETH BAY**  
8/15 BILLYARD AVENUE



\*PLANS SHOWN ONLY INDICATIVE OF LAYOUT. DIMENSIONS ARE APPROXIMATE.  
Floor plan supplied by V-Mark Design Pty Ltd. This floor plan is provided for indicative purposes only.  
Measurements are approximate and not to scale. The vendor, agency and supplier will accept no liability for its accuracy. Interested parties are advised to make their own independent enquiries.