



516/2a Elizabeth Bay Road ELIZABETH BAY, NSW

2 bed | 2 bath | 1 car

R&W

- 2-level, cross-floor apartment, dual East/West aspect
- Fine location, conjunction of Potts Point/Elizabeth Bay
- 2 bedrooms, main on lower level, 2nd on upper, w b/ins
- Sun-filled living area, mod gas kitchen, stylish dining
- Total of 5 balconies w lovely treetop and district views
- Outlook over Fitzroy Gardens to CBD, harbour glimpses
- 118sqm (approx.), 15sqm car space on title, int. laundry
- New Euro Oak flooring upstairs, plush carpet downstairs
- Under-stair storage, linen cupboard, basement storage unit

rwebay.com.au/6466738

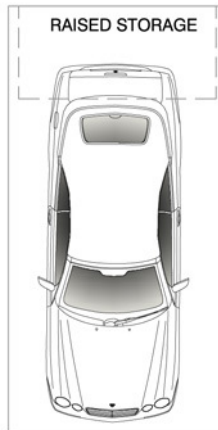
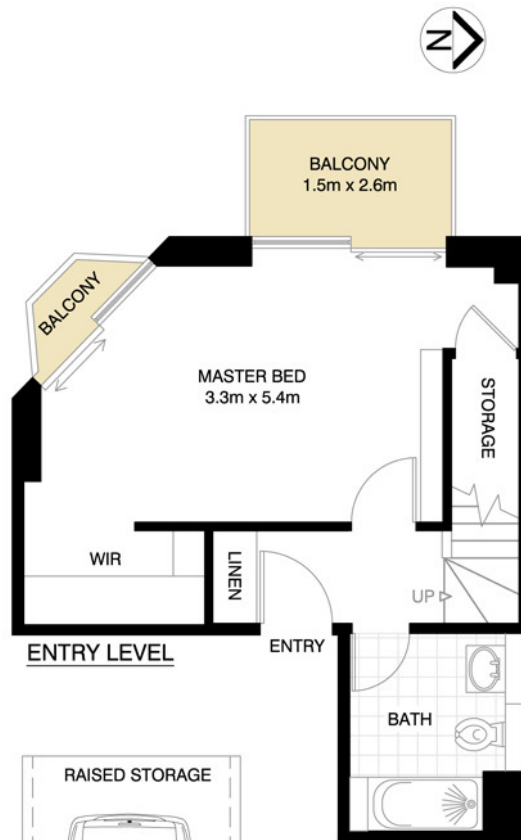
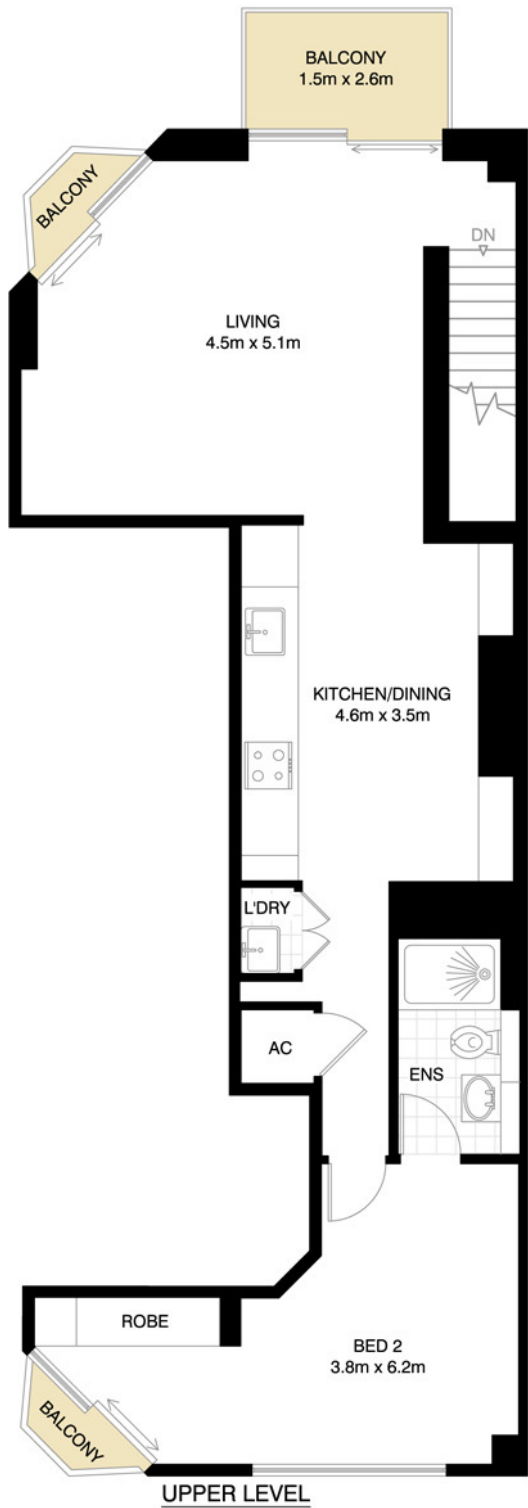
Jason Boon 0418 671 494

Geoff Cox 0418 231 004

Joss Reid 0414 662 391

Proudly Richardson&Wrench

Richardson & Wrench Elizabeth Bay / Potts Point
02 8356 2700



SECURED COVERED CAR SPACE
(NOT ACTUAL LOCATION)

ELIZABETH BAY 516/2A ELIZABETH BAY ROAD



*PLANS SHOWN ONLY INDICATIVE OF LAYOUT. DIMENSIONS ARE APPROXIMATE.
Floor plan supplied by V-Mark Design Pty Ltd. This floor plan is provided for indicative purposes only.
Measurements are approximate and not to scale. The vendor, agency and supplier will accept no liability for its accuracy. Interested parties are advised to make their own independent enquiries.