



4/97-99 Macleay St POTTS POINT, NSW

1 bed | 1 bath

- > Wood paneled entry foyer
- > Elegant hallway
- > Miele kitchen appliances and new refrigerator
- > Large bedroom with luxury carpet and built-in wardrobe
- > High ceilings
- > Former sunroom converted to dining space
- > Original timber floors
- > Central heating (included in levies)
- > Two wood paneled lifts

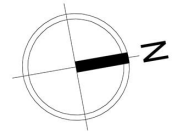
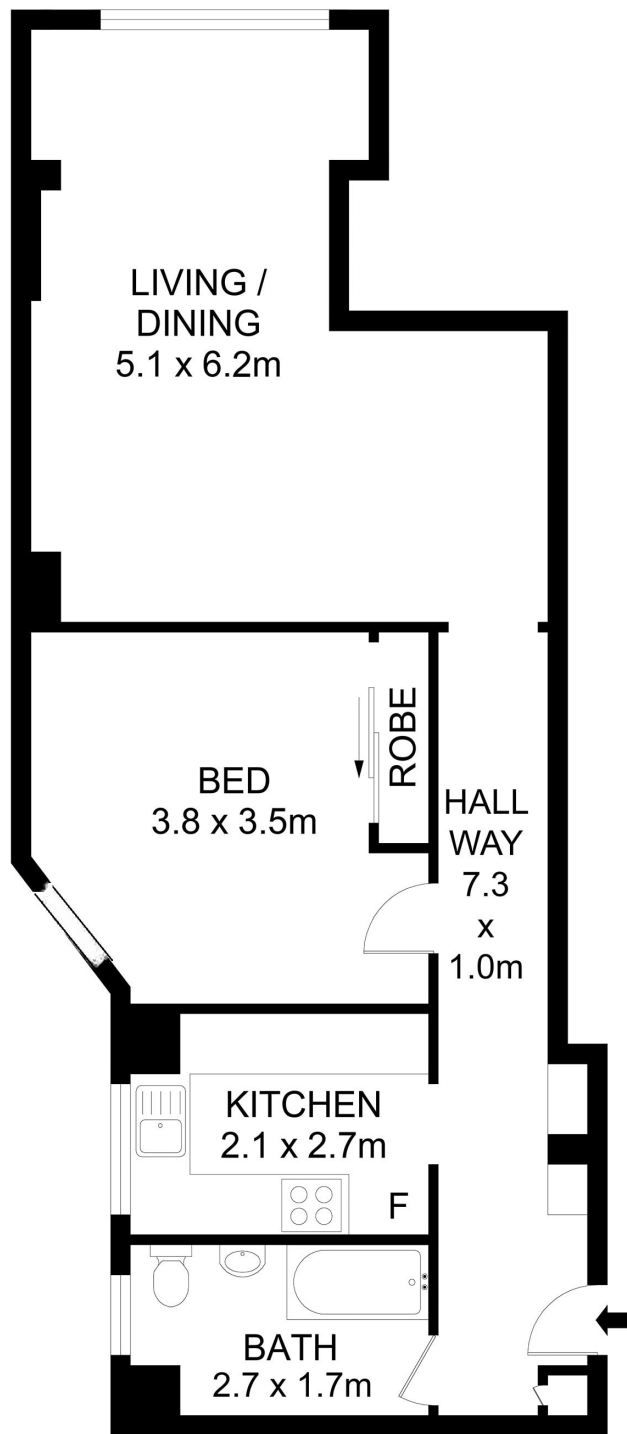
R&W

rwebay.com.au/6691392

Penny Timothy 0418 546 500

Proudly Richardson&Wrench

Richardson & Wrench Elizabeth Bay / Potts Point
02 8356 2700



4/97-99 Macleay Street, Potts Point 

Disclaimer

Floor Plan measurements are approximate and are for illustrative purposes only. While we cannot doubt the floor plans accuracy, we make no guarantee, warranty or representation as to the accuracy and completeness of the floor plan.

Every precaution has been taken to establish accuracy of the information in this brochure but does not constitute any representation by the vendor or agent.

