



103 Brougham Street WOOLLOOMOOLOO, NSW

2 bed | 1 bath | 1 car

R&W

Set in a leafy street, in a prime locale on the cusp of Potts Point, this split-level Strata townhouse offers a terrace-like feel. With a private entrance, spacious living bathed in natural light with direct courtyard access and lock up garage on title.

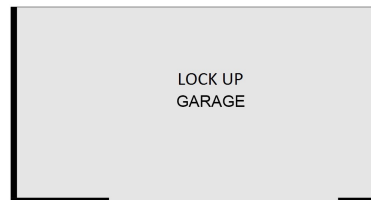
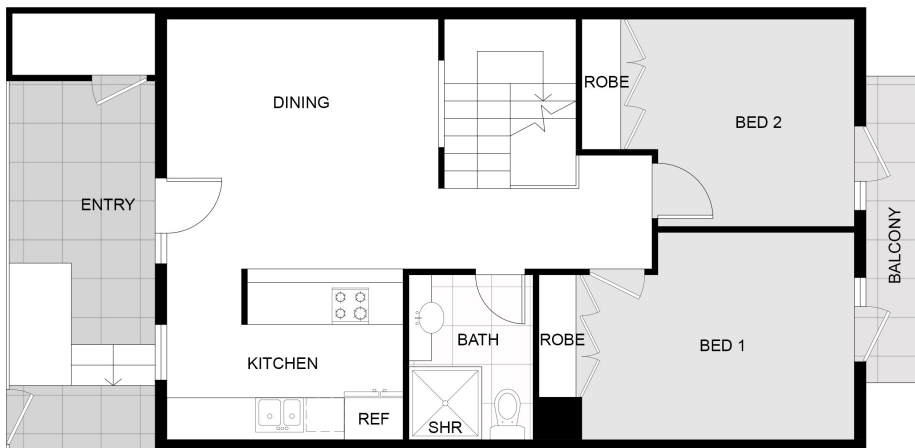
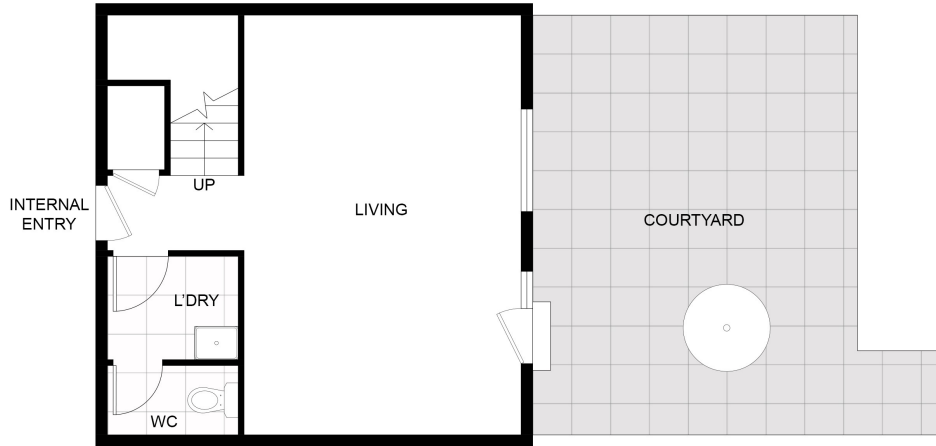
- * Private entry, split-level design, separate living & dining spaces
- * Kitchen with dishwasher, generous storage
- * Secure parking, storage room and under stair storage
- * Bedrooms with built in robes, balcony access

rwebay.com.au/6768358

Angelo Bouras 0401 658 653

Proudly Richardson&Wrench

Richardson & Wrench Elizabeth Bay / Potts Point
02 8356 2700



FLOOR PLAN

This floor plan including furniture, fixture measurements and dimensions are approximate and for illustrative purposes only. BoxBrownie.com gives no guarantee, warranty or representation as to the accuracy and layout. All enquiries must be directed to the agent, vendor or party representing this floor plan.



103 Brougham Street, Woolloomooloo

Every precaution has been taken to establish accuracy of the information in this brochure but does not constitute any representation by the vendor or agent.