



207/3-5 Greenknowe Avenue Elizabeth Bay, NSW

| 1 bath

R&W

"Tara" is an imposing Art-Deco corner building, where its brick exterior has two mirror image sides on Greenknowe & Baroda street fronts joining in a beveled fashion with a single mass of windows leading up to a castellated roofline. Featuring a Tudor arched entry, original lobby and stained glass crested windows.

rwebay.com.au/7046459

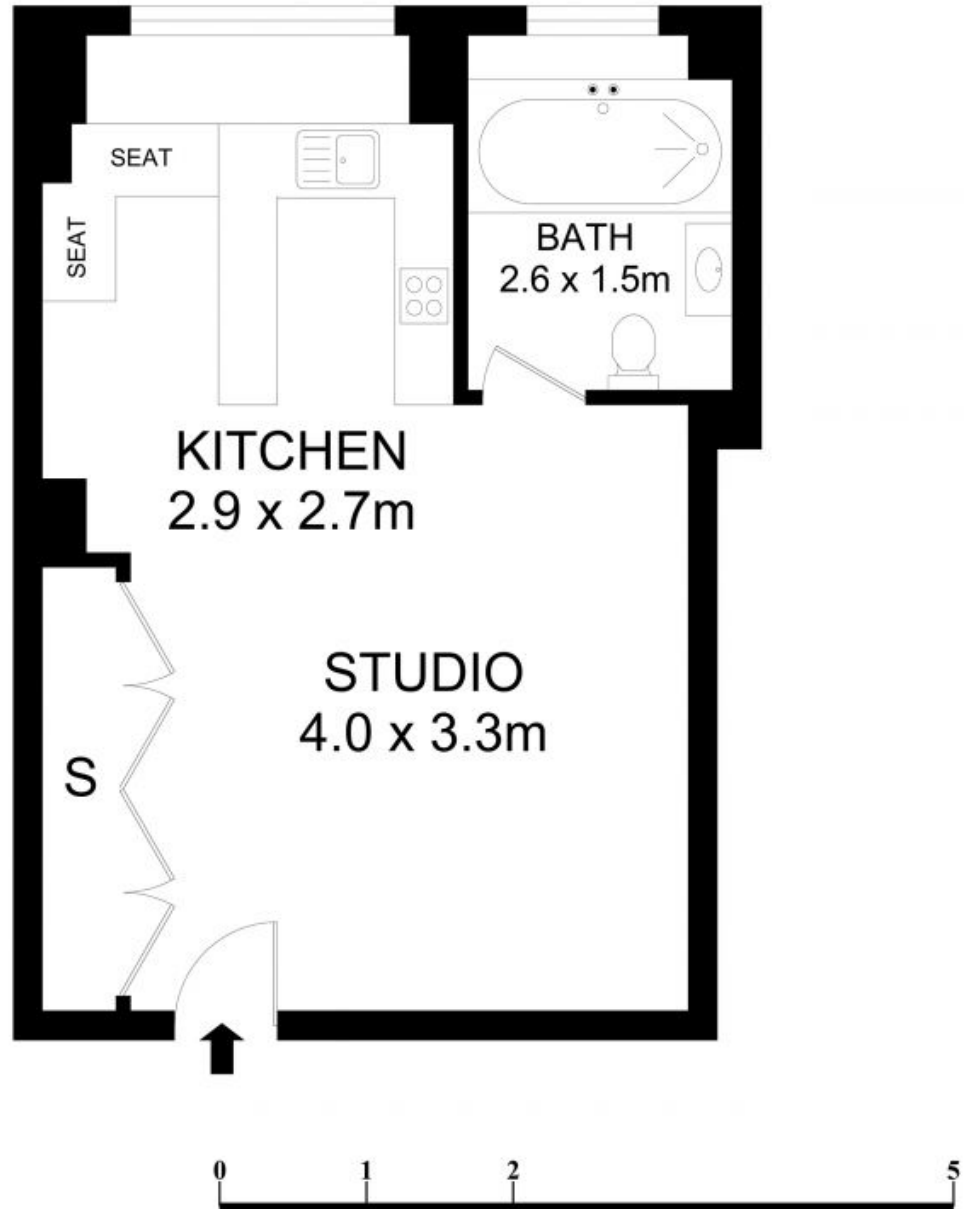
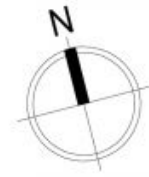
Rod Angus 0419 599 888

Proudly Richardson&Wrench

Richardson & Wrench Elizabeth Bay / Potts Point
02 8356 2700

- Character features, high ceilings
- Cross flow ventilation, sunny interiors

Strata: \$854pq...



207/3-5 Greenknowe Avenue, Potts Point

Disclaimer

Floor Plan measurements are approximate and are for illustrative purposes only. While we cannot doubt the floor plans accuracy, we make no guarantee, warranty or representation as to the accuracy and completeness of the floor plan.