



## 15/8 Greenknowe Avenue Elizabeth Bay, NSW

1 bed | 1 bath | 1 car

Oversized one bedroom apartment in one Elizabeth Bay's premier building offering approximately 80sqm of single level living. North east facing with flexible living zones allowing for double width living with a true sense of space.

**R&W**

[rwebay.com.au/7185099](http://rwebay.com.au/7185099)

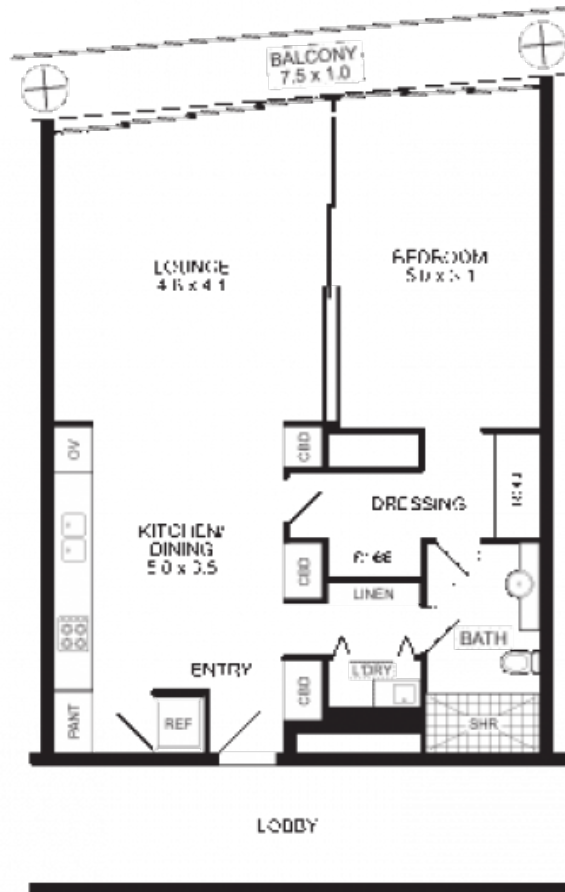
Greg McKinley 0412 044 822

Andrew Hoggett 0412 208 614

**Proudly Richardson&Wrench**

Richardson & Wrench Elizabeth Bay / Potts Point  
02 8356 2700

*Apartment 15*  
 8 Greenknowe Avenue  
 ELIZABETH BAY



PARKING  
 2.5 x 2.7

**GARAGE**  
 Scale 1cm = 1m (approx)

**FLOOR PLAN**  
 Scale 1cm = 1m (approx)



14. This plan is a diagrammatic representation of the proposed development and is not intended to be used as a basis for any legal proceedings. It is subject to the approval of the relevant authorities.

Contact:  
 Greg McKinley 0412 044 822

---

**RICHARDSON & WRENCH**  
 Elizabeth Bay

---

Phone 9357 3322  
 Fax 9357 7523  
 office@rwebay.com.au  
 www.rwebay.com.au