



3/2 Iluka Street Street Rose Bay, NSW

2 bed | 1 bath

R&W

Conveniently positioned on the ground floor of a small boutique block of 12, this character Art Deco apartment enjoys a leafy street aspect while located a short stroll to the harbour foreshore. Offering a spacious 90sqm floorplan, great natural light, character art-deco features, eat-in kitchen, internal laundry and large sunroom. Well positioned just a short walk to Rose Bay village shops, Lyne Park, Rose Bay beach & ferry terminal.

- Large 90sqm semi-style floorplan

Council Rates: \$368pq...

[rwebay.com.au/7316675](https://www.rwebay.com.au/7316675)

Rod Angus 0419 599 888

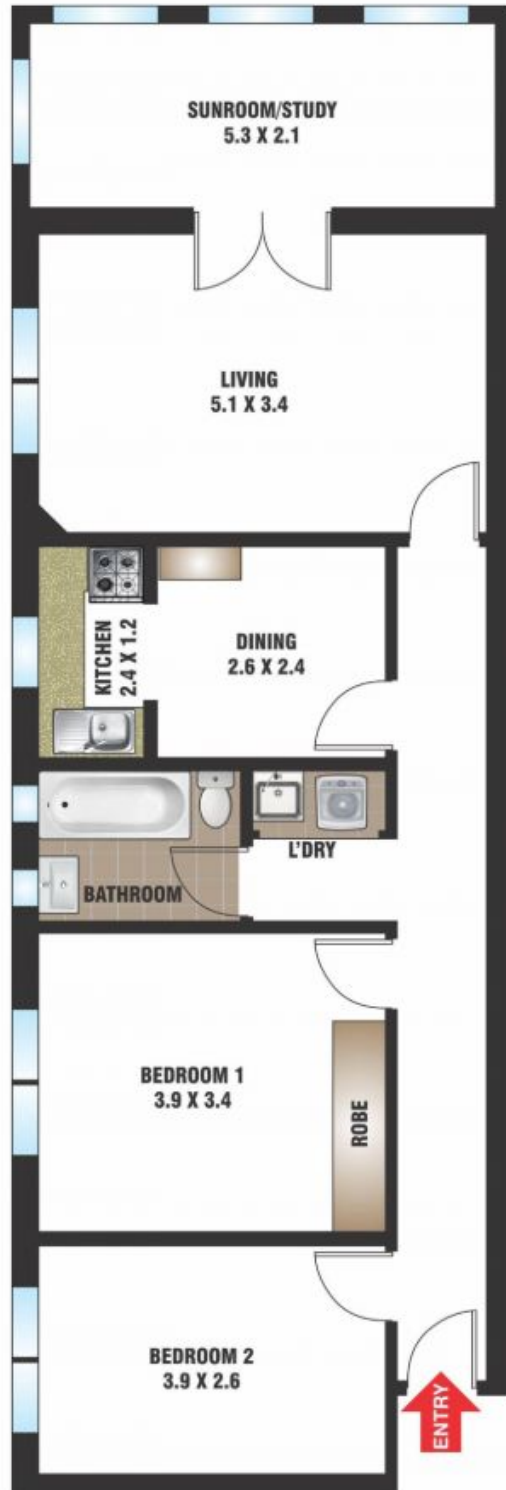
Proudly Richardson&Wrench

Richardson & Wrench Elizabeth Bay / Potts Point
02 8356 2700

R&W

Elizabeth Bay
TEL: 02 8356 2700

3/2 Iluka Street
ROSE BAY



FLOOR PLAN BY BORTEX PTY LTD PH: 0414 922 679

"The information contained herein has been provided by our Principal and third parties, which we merely pass on without any representation or warranty given, intended or implied by us as to its correctness and with no liability accepted by us in this regard. You must rely on your own inquiries as to its accuracy or otherwise."

Every precaution has been taken to establish accuracy of the information in this brochure but does not constitute any representation by the vendor or agent.

R&W