



20 Crown Street Woolloomooloo, NSW

3 bed | 2 bath | 2 car

R&W

- * One original bathroom with an additional rear w/c
- * Elegant formal living and dining rooms, original timber flooring throughout
- * Sun-drenched casual entertaining areas
- * Renovated kitchen with ample storage, gas cooking, dishwasher, stone tops
- * Expansive master bedroom with double French doors leading to a covered balcony, two generously sized bedrooms w/ air-con

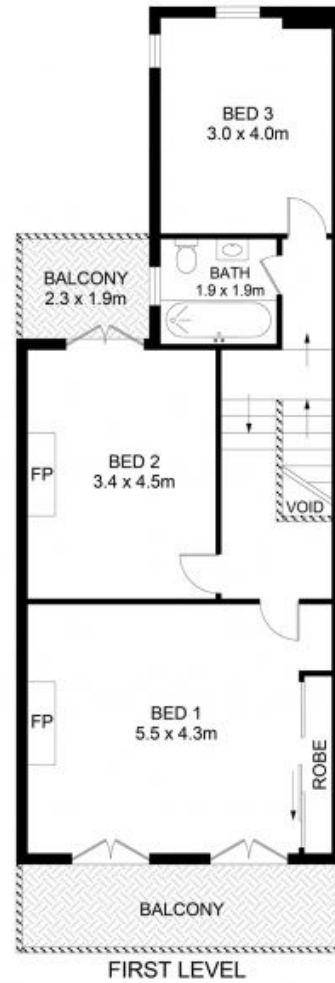
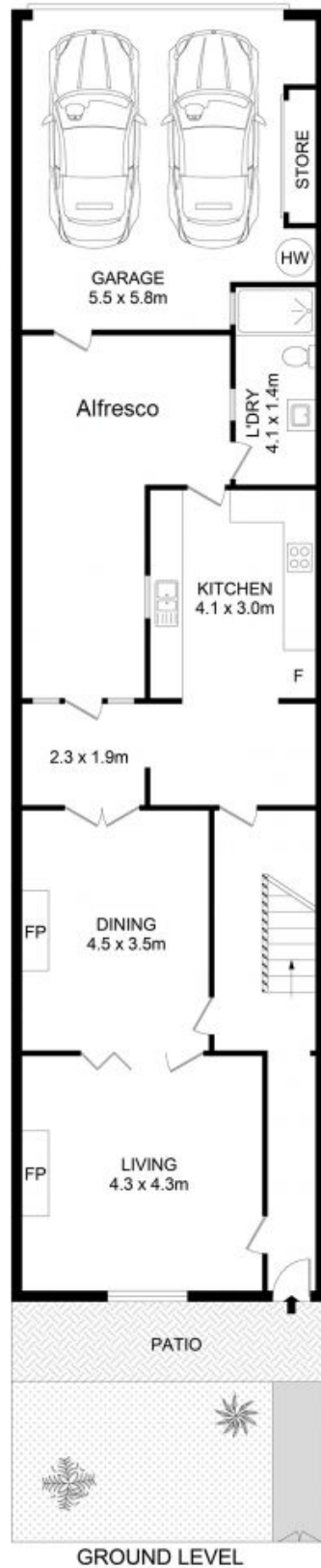
rwebay.com.au/7578805

Jason Boon 0418 671 494

Angelo Bouras 0401 658 653

Proudly Richardson&Wrench

Richardson & Wrench Elizabeth Bay / Potts Point
02 8356 2700



20 Crown Street, Woolloomooloo



Disclaimer

Floor Plan measurements are approximate and are for illustrative purposes only. While we cannot doubt the floor plans accuracy, we make no guarantee, warranty or representation as to the accuracy and completeness of the floor plan.