



11/6 Billyard Avenue Elizabeth Bay, NSW

1 bed | 1 bath

Presenting a rare opportunity at one of Elizabeth Bay's most prestigious addresses, this unique apartment offers an unparalleled waterfront position in a solid Art Deco building. Rich in local history, 'Edgewater', a grand block of 27 apartments built circa 1937, is immaculately presented with landscaped grounds and period features throughout. Launch your kayak from the sea steps or swim laps in the shared harbour pool.

Perfectly positioned with oversized windows to take full advantage of the views. The apartment offers the ultimate harbourside lifestyle. A rare opportunity indeed!

...

R&W

rwebay.com.au/7698390

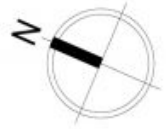
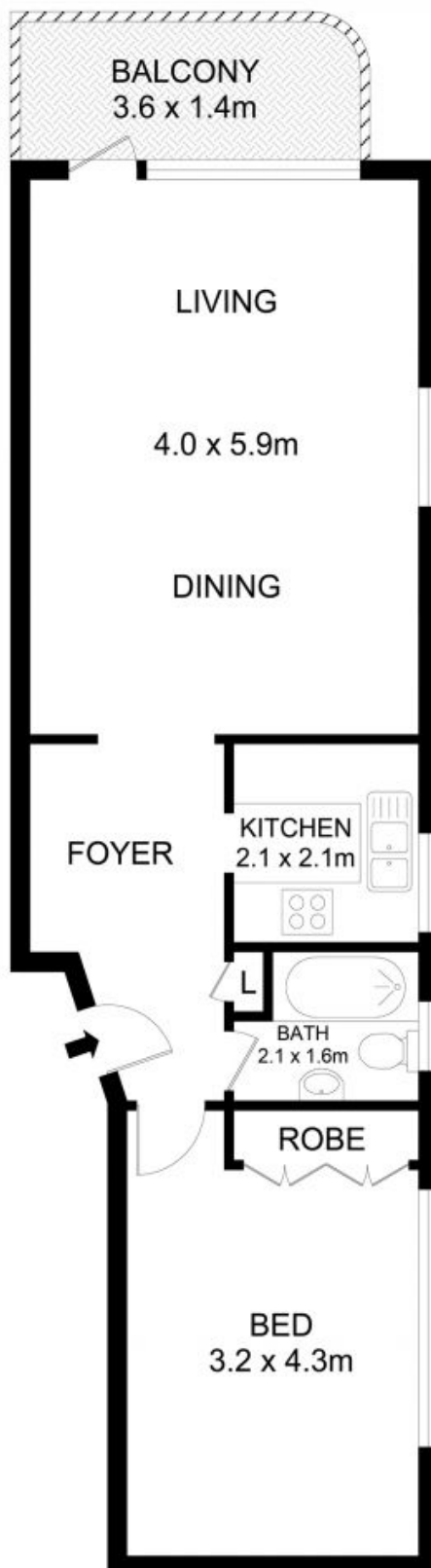
Greg McKinley 0412 044 822

Andrew Hoggett 0412 208 614

Penny Timothy 0418 546 500

Proudly Richardson&Wrench

Richardson & Wrench Elizabeth Bay / Potts Point
02 8356 2700



11/6 Billyard Avenue, Elizabeth Bay



Disclaimer

Floor Plan measurements are approximate and are for illustrative purposes only. While we cannot doubt the floor plans accuracy, we make no guarantee, warranty or representation as to the accuracy and completeness of the floor plan

Every precaution has been taken to establish accuracy of the information in this brochure but does not constitute any representation by the vendor or agent.

R&W