



## 614/15 Bayswater Road Potts Point, NSW

2 bed | 2 bath | 1 car

This magnificent apartment benefits from a stunning ren...

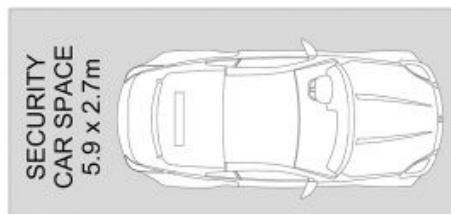
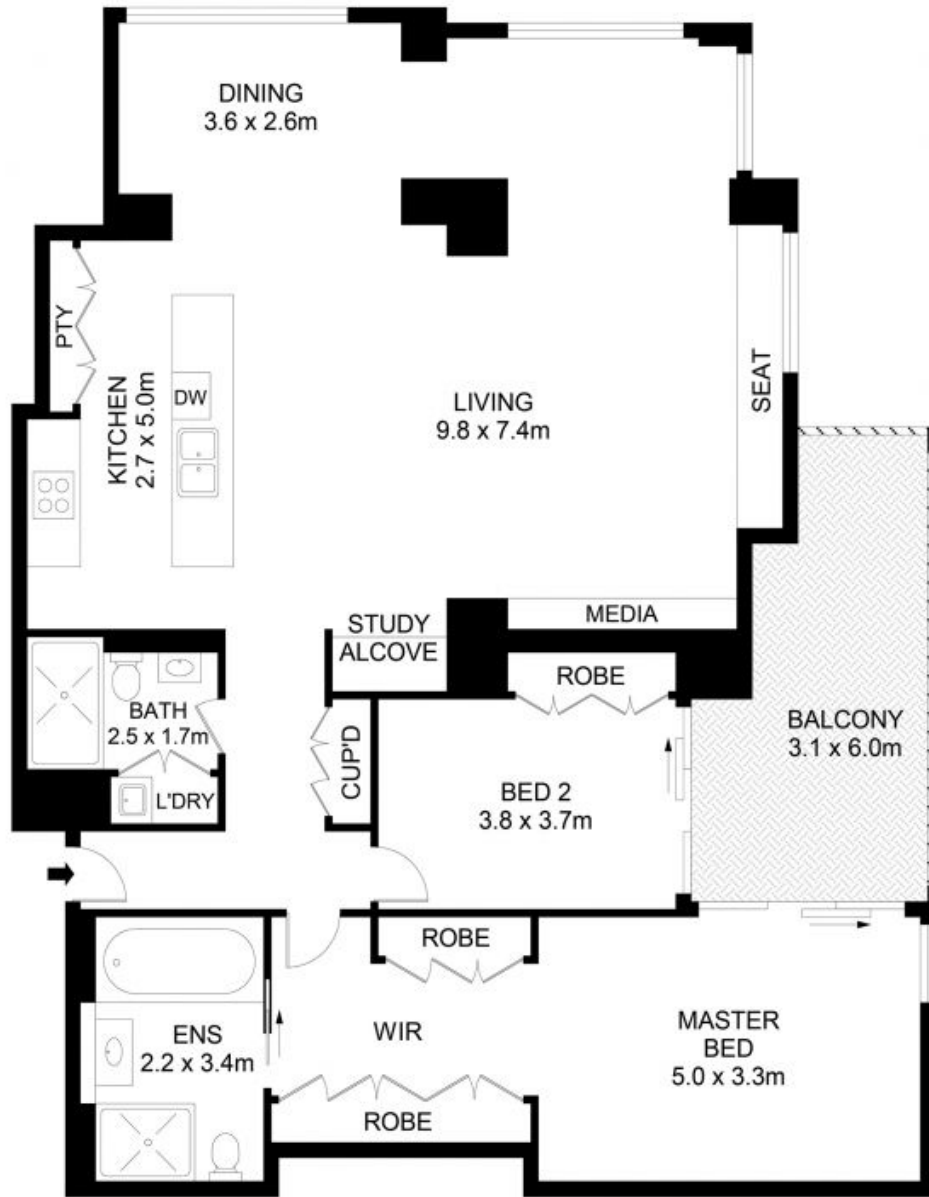
**R&W**

[rwebay.com.au/7725567](https://rwebay.com.au/7725567)

Angelo Bouras 0401 658 653

**Proudly Richardson&Wrench**

Richardson & Wrench Elizabeth Bay / Potts Point  
02 8356 2700



## 614/15 Bayswater Road, Potts Point



### Disclaimer

Floor Plan measurements are approximate and are for illustrative purposes only. While we cannot doubt the floor plans accuracy, we make no guarantee, warranty or representation as to the accuracy and completeness of the floor plan.

Every precaution has been taken to establish accuracy of the information in this brochure but does not constitute any representation by the vendor or agent.