



## 28/16 Macleay Street Potts Point, NSW

2 bed | 1 bath

# R&W

- [x] Superb 2-bed apartment in iconic Art Deco building
- [x] Set in "The Selsdon", by architects Provost & Ruwald
- [x] High ceilings, ornate window frames, cityscape views
- [x] Living space featuring bay window w/ custom seat
- [x] Formal dining offers multi-use potential, study/office
- [x] Both bedrooms sunlit and airy, master with built-ins
- [x] Modern kitchen and bathroom, fine security building
- [x] Wood-panelled foyer, lift access, common laundry
- [x] Opposite the famed Challis Ave row of cafes, eateries

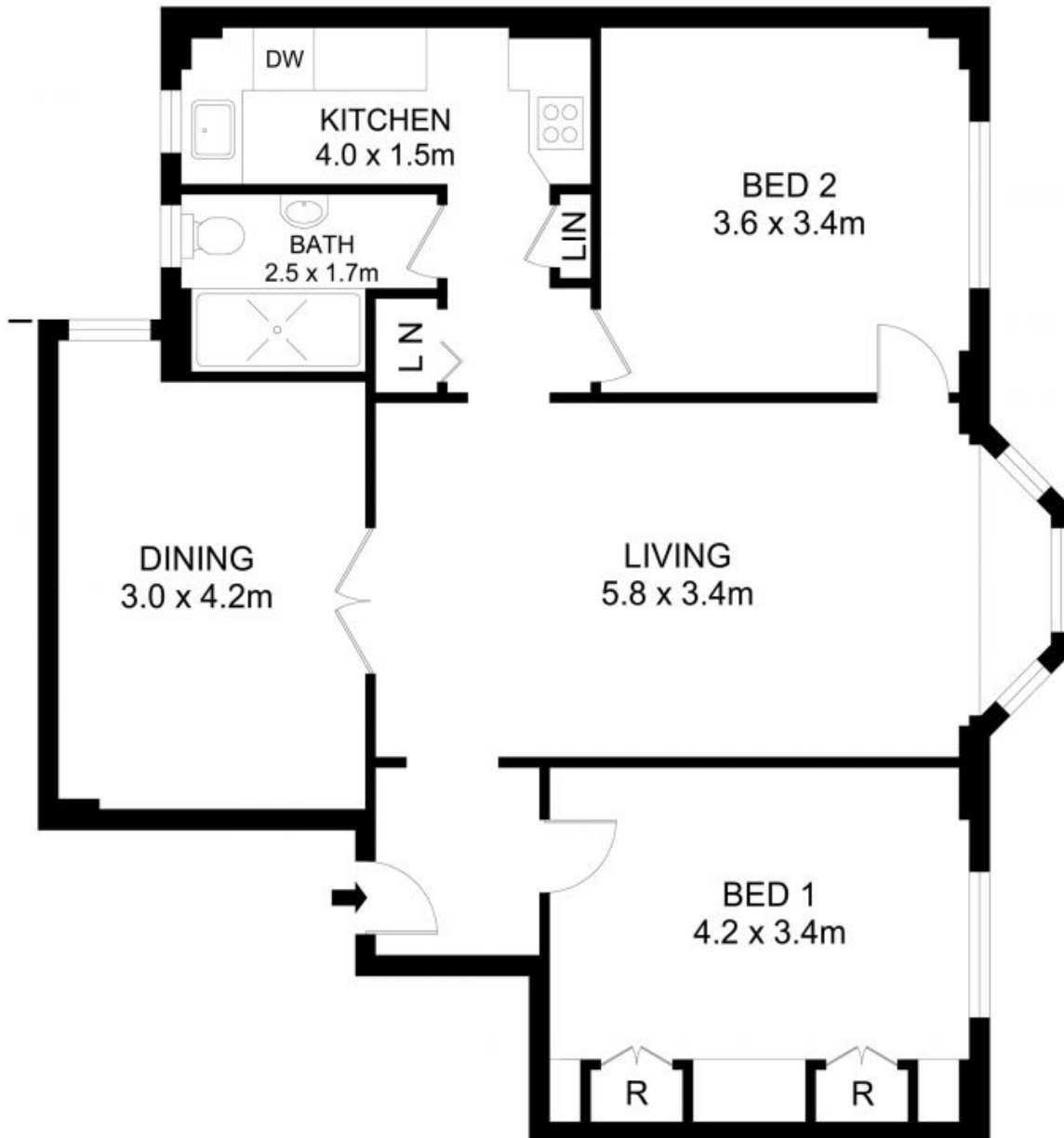
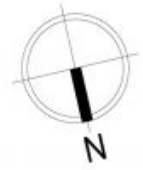
Approx Outgoings...

[rwebay.com.au/7725695](https://rwebay.com.au/7725695)

Angelo Bouras 0401 658 653

**Proudly Richardson&Wrench**

Richardson & Wrench Elizabeth Bay / Potts Point  
02 8356 2700



## 28/16 Macleay Street, Potts Point



### Disclaimer

Floor Plan measurements are approximate and are for illustrative purposes only. While we cannot doubt the floor plans accuracy, we make no guarantee, warranty or representation as to the accuracy and completeness of the floor plan.

Every precaution has been taken to establish accuracy of the information in this brochure but does not constitute any representation by the vendor or agent.

**R&W**