



## 1204/2 Elizabeth Bay Road Elizabeth Bay, NSW

1 bed | 1 bath | 1 car

**R&W**

Featuring 2 private balconies and a flowing floorplan filled with N-W sunshine, this newly renovated contemporary apartment offers indoor/outdoor living with stunning views from all rooms. High above the fashionable enclave, here's a sensational property to live in with lifestyle to match along with lofty views of the Harbour to Manly & CBD skyline including the Sydney Harbour Bridge. Offering creative flair, smart finishes and the quiet exclusivity of a tightly held modern landmark security tower, it's a lift ride to shops, cafes, parks, transport and cosmopolitan Macleay Street.

\* Level access via impressive 2-way lobby or security p...

**[rwebay.com.au/7735854](http://rwebay.com.au/7735854)**

Luke McDonnell 0418 844 110

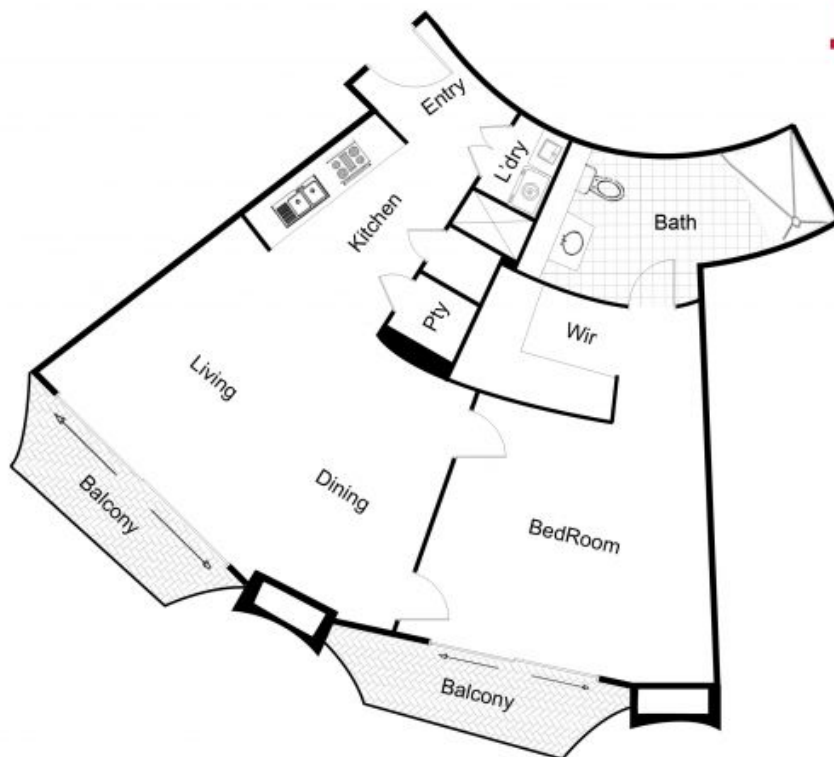
Penny Timothy 0418 546 500

**Proudly Richardson&Wrench**

Richardson & Wrench Elizabeth Bay / Potts Point  
02 8356 2700



**R&W**



This floor plan including furniture, fixture measurements and dimensions are approximate and for illustrative purposes only.  
Boxbrownie.com gives no guarantee, warranty or representation as to the accuracy and layout. All enquiries must be directed to the agent, vendor or party representing this floor plan.

1204/2 Elizabeth Bay Road, Elizabeth Bay

**R&W**