



6/4 Billyard Avenue Elizabeth Bay, NSW

2 bed | 2 bath | 1 car

- Deco harbour grace w/ jetty in 'Grandview'
- Beautiful blend of mod. finesse + Deco charm
- Sweeping vistas across iconic Sydney Harbour
- Open living/dining flows to lovely sunny terrace
- Master w/ ensuite, walk-thru robe, dressing room
- Super-quiet 2nd bedroom featuring b/in robes
- Sleek modern kitchen w/ top-tier appliances
- Sunny study niche offering tranquil water views
- Main bathroom outfitted with premium finishes

R&W

rwebay.com.au/7736559

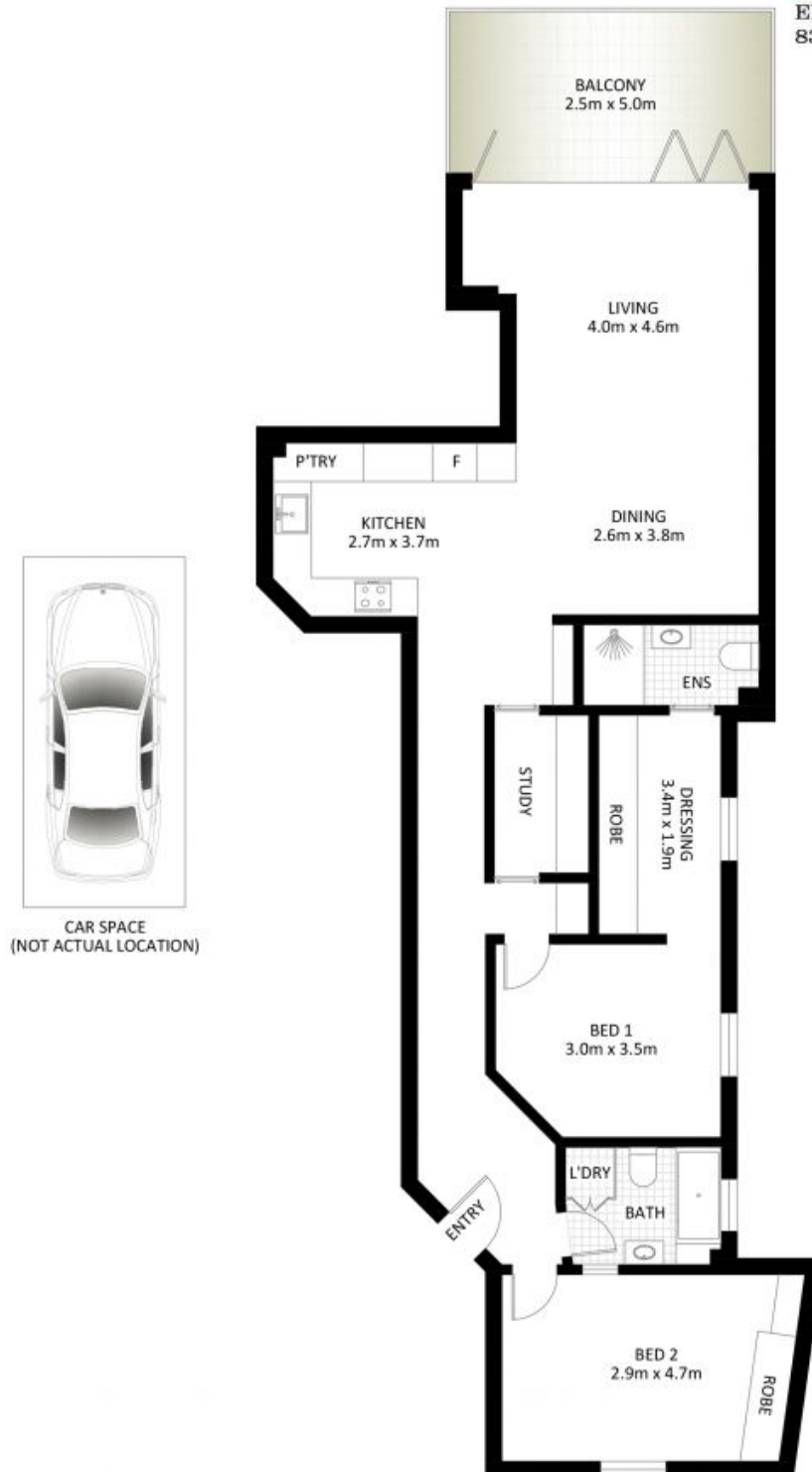
Jason Boon 0418 671 494

Geoff Cox 0418 231 004

Joss Reid 0414 662 391

Proudly Richardson&Wrench

Richardson & Wrench Elizabeth Bay / Potts Point
02 8356 2700

**R&W**Elizabeth Bay / Potts Point
8356 2700

6/4 Billyard Avenue, Elizabeth Bay



*PLANS SHOWN ONLY INDICATIVE OF LAYOUT. DIMENSIONS ARE APPROXIMATE.

Measurements are approximate and not to scale. The vendor, agency and supplier will accept no liability for its accuracy. Interested parties are advised to make their own independent enquiries.

Every precaution has been taken to establish accuracy of the information in this brochure but does not constitute any representation by the vendor or agent.

R&W