



## 1109/81 Macleay Street Potts Point, NSW

2 bed | 2 bath | 1 car

- Set over 2 levels high in iconic Potts Point address
- Radiant living/dining opens to E/NE-facing terrace
- Incredible views right up Sydney Harbour to Heads
- Upper main suite w/ b/in robes, en-suite, fine views
- Lower 2nd bedroom w/ b/ins, chic main bathroom
- Sleek gas kitchen w/ stone benches, Miele cooking
- Secure underground parking + separate storage room
- Internal laundry, ducted air conditioning
- Famed setting, concierge, pool, gym, steam room

# R&W

[rwebay.com.au/7736780](http://rwebay.com.au/7736780)

Jason Boon 0418 671 494

Geoff Cox 0418 231 004

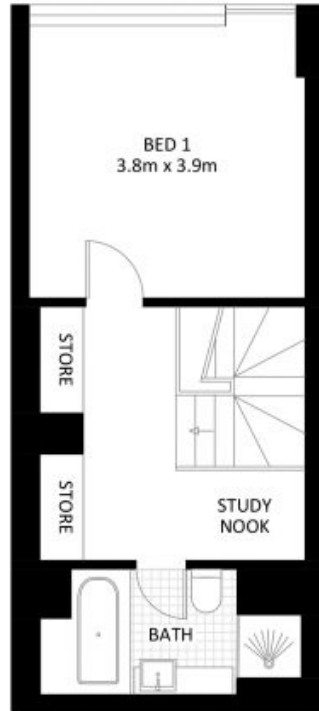
Joss Reid 0414 662 391

**Proudly Richardson&Wrench**

Richardson & Wrench Elizabeth Bay / Potts Point  
02 8356 2700



Elizabeth Bay / Potts Point  
8356 2700



UPPER LEVEL



ENTRY LEVEL



SECURITY CAR SPACE  
(NOT ACTUAL LOCATION)



## 1109/81 Macleay Street, Potts Point

\*PLANS SHOWN ONLY INDICATIVE OF LAYOUT. DIMENSIONS ARE APPROXIMATE.

Measurements are approximate and not to scale. The vendor, agency and supplier will accept no liability for its accuracy. Interested parties are advised to make their own independent enquiries.

Every precaution has been taken to establish accuracy of the information in this brochure but does not constitute any representation by the vendor or agent.

