



## 804/2 Elizabeth Bay Road Elizabeth Bay, NSW

1 bed | 1 bath | 1 car

**R&W**

Enviably positioned on the 8th floor of the landmark Gazebo, this spacious 1-bedroom apartment offers an executive lifestyle in the heart of Potts Point. With 3 balconies and a panoramic view that stretches from Rushcutters Bay, across the CBD, and beyond Fitzroy Gardens, this is a home in the heart of the enviable lifestyle.

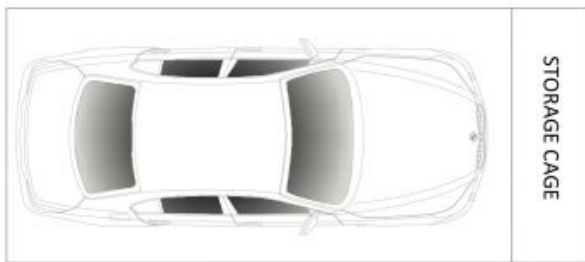
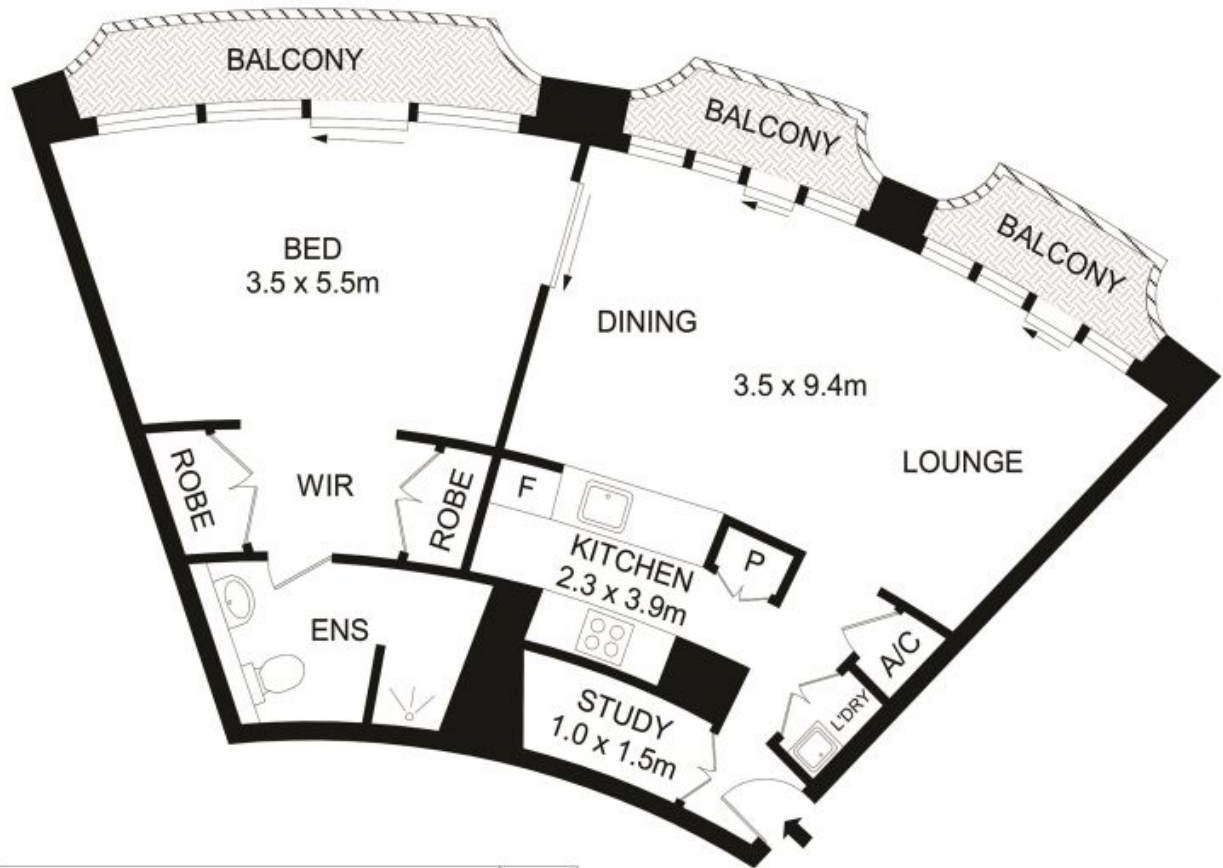
It blends convenience with an emphasis on clean finishes...

[rwebay.com.au/7737719](https://rwebay.com.au/7737719)

Angelo Bouras 0401 658 653

**Proudly Richardson&Wrench**

Richardson & Wrench Elizabeth Bay / Potts Point  
02 8356 2700



SECURITY CAR SPACE  
(NOT ACTUAL LOCATION)



## 804/2 Elizabeth Bay Road, Elizabeth Bay

### Disclaimer

Floor Plan measurements are approximate and are for illustrative purposes only. While we cannot doubt the floor plans accuracy, we make no guarantee, warranty or representation as to the accuracy and completeness of the floor plan.