



45/60-70 William Street Woolloomooloo, NSW

2 bed | 2 bath | 1 car

R&W

North facing and abundant in natural light, the extensive use of floor to ceiling glass combined with an array of quality finishes contributes to a sense of luxury and space. On the cusp of the cbd, hyde park & the domain, this apartment is the optimum cosmopolitan address for a sophisticated lifestyle.

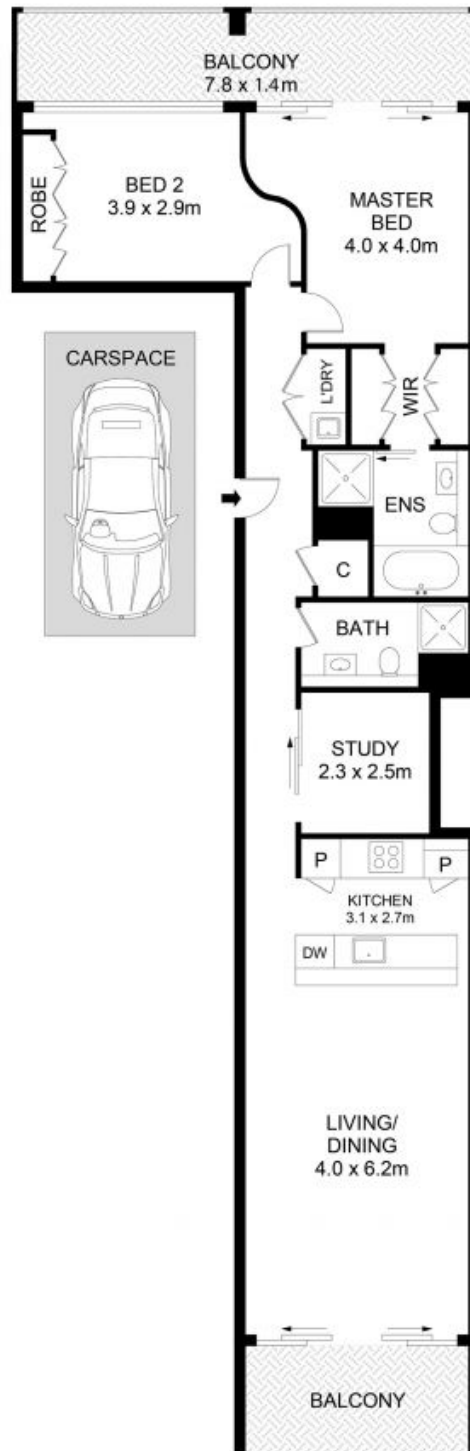
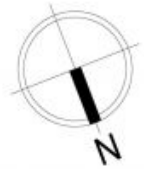
- * Resort style rooftop pool & sauna with panoramic views
- * North facing open plan living flows seamlessly to u/cover balcony
- * Modern gas kitchen with quality appliances & caesarstone bench tops
- * Master bedroom with walk through robe to ensuite with...

rwebay.com.au/7764327

Angelo Bouras 0401 658 653

Proudly Richardson&Wrench

Richardson & Wrench Elizabeth Bay / Potts Point
02 8356 2700



45/60-70 William Street, Woolloomooloo



Disclaimer

Floor Plan measurements are approximate and are for illustrative purposes only. While we cannot doubt the floor plans accuracy, we make no guarantee, warranty or representation as to the accuracy and completeness of the floor plan.

Every precaution has been taken to establish accuracy of the information in this brochure but does not constitute any representation by the vendor or agent.

R&W