



1406/21 Elizabeth Bay Road Elizabeth Bay, NSW

3 bed | 2 bath | 2 car

R&W

Positioned in the famed "Encore", this stunning 3-bedro...

rwebay.com.au/7767956

Jason Boon 0418 671 494

Geoff Cox 0418 231 004

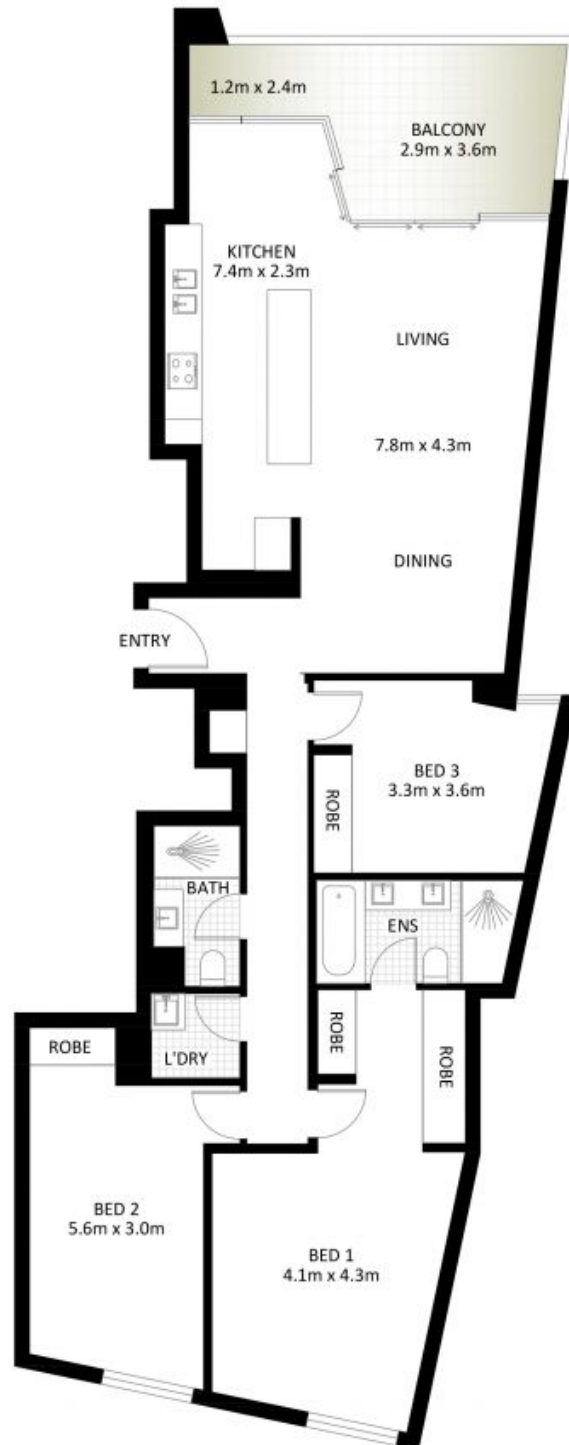
Joss Reid 0414 662 391

Proudly Richardson&Wrench

Richardson & Wrench Elizabeth Bay / Potts Point
02 8356 2700



Elizabeth Bay / Potts Point
8356 2700



SECURE CAR SPACE (NOT ACTUAL LOCATION) SECURE CAR SPACE (NOT ACTUAL LOCATION)



1406/21 Elizabeth Bay Road, Elizabeth Bay

*PLANS SHOWN ONLY INDICATIVE OF LAYOUT. DIMENSIONS ARE APPROXIMATE.

Measurements are approximate and not to scale. The vendor, agency and supplier will accept no liability for its accuracy. Interested parties are advised to make their own independent enquiries.

Every precaution has been taken to establish accuracy of the information in this brochure but does not constitute any representation by the vendor or agent.

