



710/81 Macleay Street Potts Point, NSW

2 bed | 2 bath | 1 car

Beautifully positioned in the acclaimed Ikon, one of Potts Point's most sought-after addresses, this superb 2-bedroom home delivers a premier lifestyle right in the heart of this buzzing neighbourhood. Spanning 2 levels on the 7th and 8th floors, it offers views over Macleay St and down to Rushcutters Bay, setting the stage for a perfect Inner-East experience.

An apartment-wide entertainers' balcony serves the spac...

R&W

rwebay.com.au/7774521

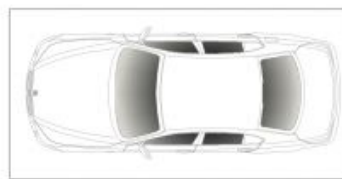
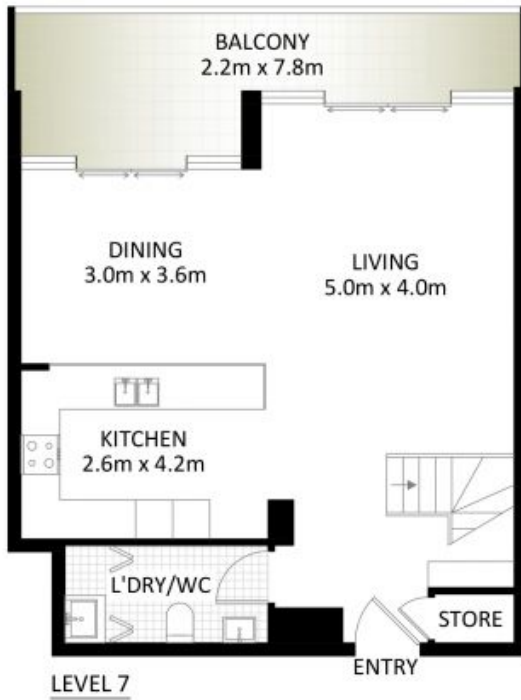
Jason Boon 0418 671 494

Joss Reid 0414 662 391

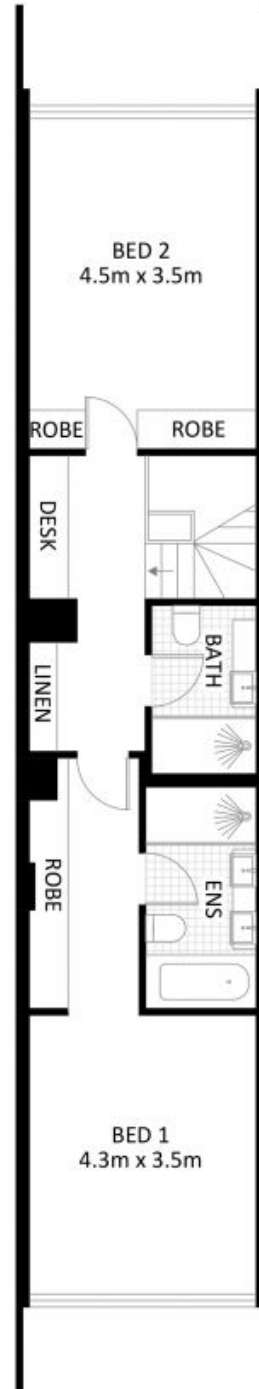
Geoff Cox 0418 231 004

Proudly Richardson&Wrench

Richardson & Wrench Elizabeth Bay / Potts Point
02 8356 2700



**SECURE CAR SPACE
(NOT ACTUAL LOCATION)**



710/81 Macleay Street, Potts Point

*PLANS SHOWN ONLY INDICATIVE OF LAYOUT. DIMENSIONS ARE APPROXIMATE.

Measurements are approximate and not to scale. The vendor, agency and supplier will accept no liability for its accuracy. Interested parties are advised to make their own independent enquiries.

Every precaution has been taken to establish accuracy of the information in this brochure but does not constitute any representation by the vendor or agent.