



61/8 Birtley Place Elizabeth Bay, NSW

4 bed | 2 bath | 1 car

Located in 'Birtley Towers', one of Australia's most significant Art Deco buildings, this stunning home has never been presented for sale. Apartment 61 combines two apartments and a foyer. The original building owner's apartment, it was sold privately in 1987 to the second of only two owners in almost 90 years. The unique arched front door was retained from the 'Birtley' mansion that previously stood on the site. Completely unique, no other apartment in Birtley Towers encompasses this generous configuration.

Positioned high on level 6, this elegant home features ...

R&W

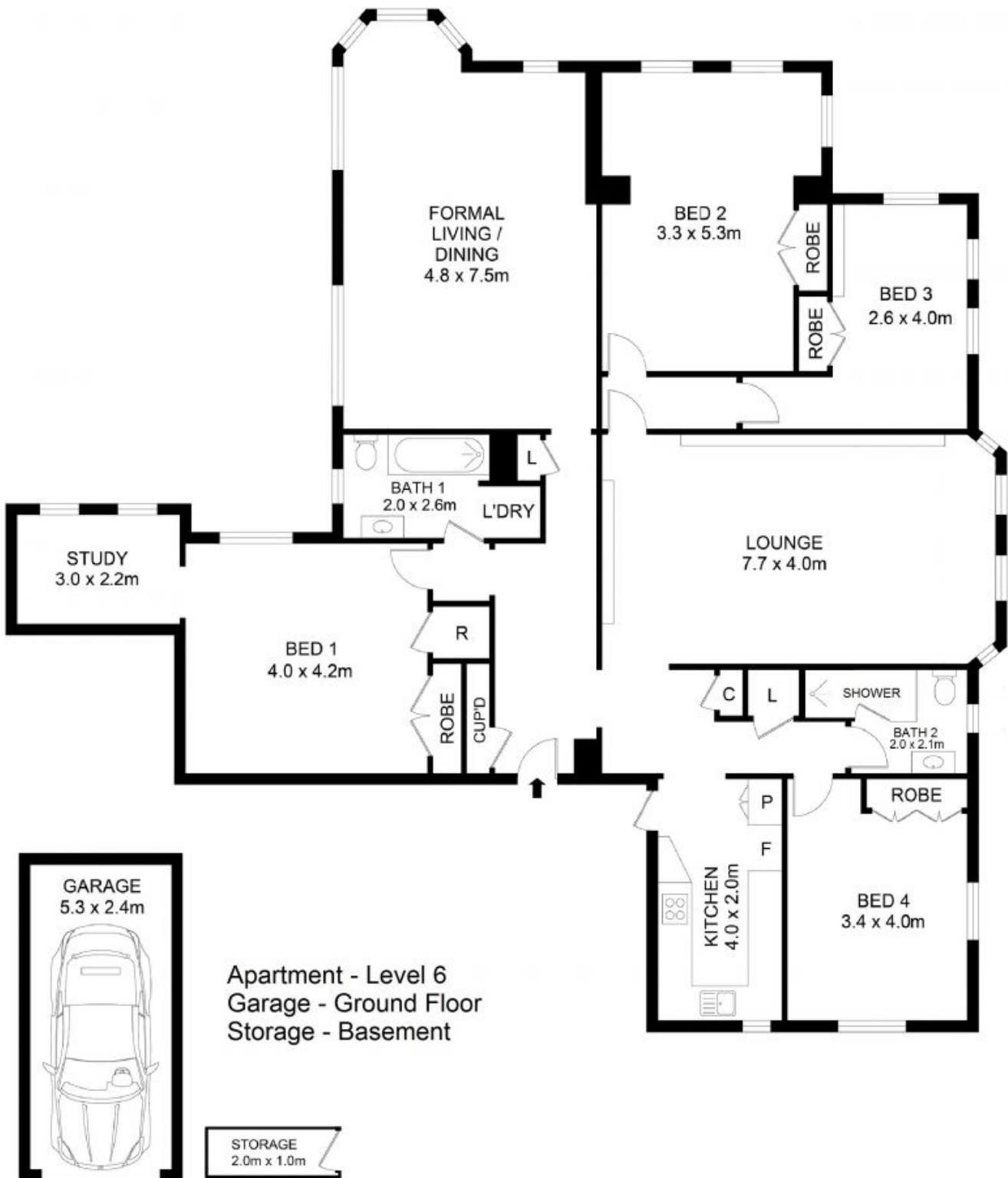
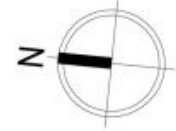
rwebay.com.au/7777816

Penny Timothy 0418 546 500

Luke McDonnell 0418 844 110

Proudly Richardson&Wrench

Richardson & Wrench Elizabeth Bay / Potts Point
02 8356 2700



61/8 Birtley Place, Elizabeth Bay



Disclaimer

Floor Plan measurements are approximate and are for illustrative purposes only. While we cannot doubt the floor plans accuracy, we make no guarantee, warranty or representation as to the accuracy and completeness of the floor plan.

Every precaution has been taken to establish accuracy of the information in this brochure but does not constitute any representation by the vendor or agent.

R&W