



## 33/9 Ward Avenue Potts Point, NSW

1 bed | 1 bath

Beautifully positioned on level 3 this sun drenched Art-Deco style 1brm apartment has great natural light & all day sun. Offering a duel east-west aspect, in a premium lifestyle Potts Point setting, a short stroll to Macleay St, Fitzroy Gardens, Elizabeth Bay harbour foreshore, Rushcutters Bay Park and train to CBD. Ready for a first home buyer, downsizer, investor or "pied-a-terre".

- Character features, high ceilings
- Cross flow ventilation, sunny interiors

Size: 32sqm...

# R&W

[rwebay.com.au/7778355](http://rwebay.com.au/7778355)

Rod Angus 0419 599 888

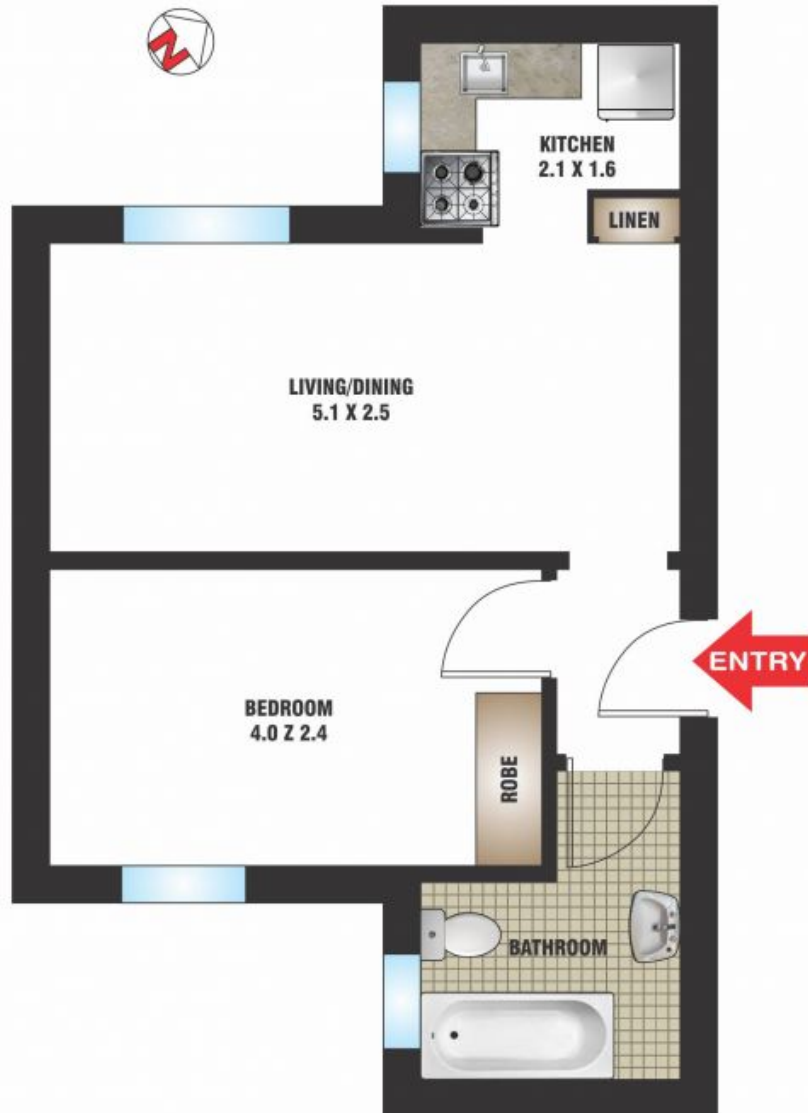
**Proudly Richardson&Wrench**

Richardson & Wrench Elizabeth Bay / Potts Point  
02 8356 2700



Elizabeth Bay  
TEL: 02 8356 2700

33/9 Ward Avenue  
POTTS POINT



FLOOR PLAN BY BORTEX PTY LTD PH: 0414 922 679

"The information contained herein has been provided by our Principal and third parties, which we merely pass on without any representation or warranty given, intended or implied by us as to its correctness and with no liability accepted by us in this regard. You must rely on your own inquiries as to its accuracy or otherwise."

Every precaution has been taken to establish accuracy of the information in this brochure but does not constitute any representation by the vendor or agent.

