



518/81 Macleay Street Potts Point, NSW

1 bed | 1 bath | 1 car

- 5th level, bathed in sun, lovely views to harbour
- Stylish and unique layout, set over 2 serene levels
- Sunlit living/dining flows to balcony w/ superb views
- Upper full-floor bedroom zone, b/in + walk-in robes
- Huge ensuite bathroom, fine space for office/study
- Clever Miele gas kitchen, stone benches, d/washer
- A/C and convenient concealed internal laundry
- Easy level lift access to secure private parking for 1
- First time offered in 15 years, in impeccable condition

R&W

rwebay.com.au/7785800

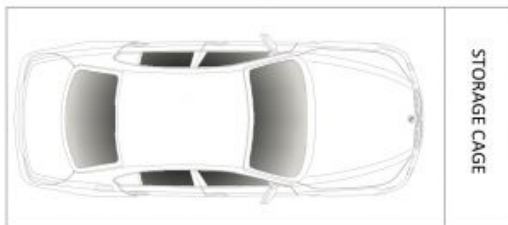
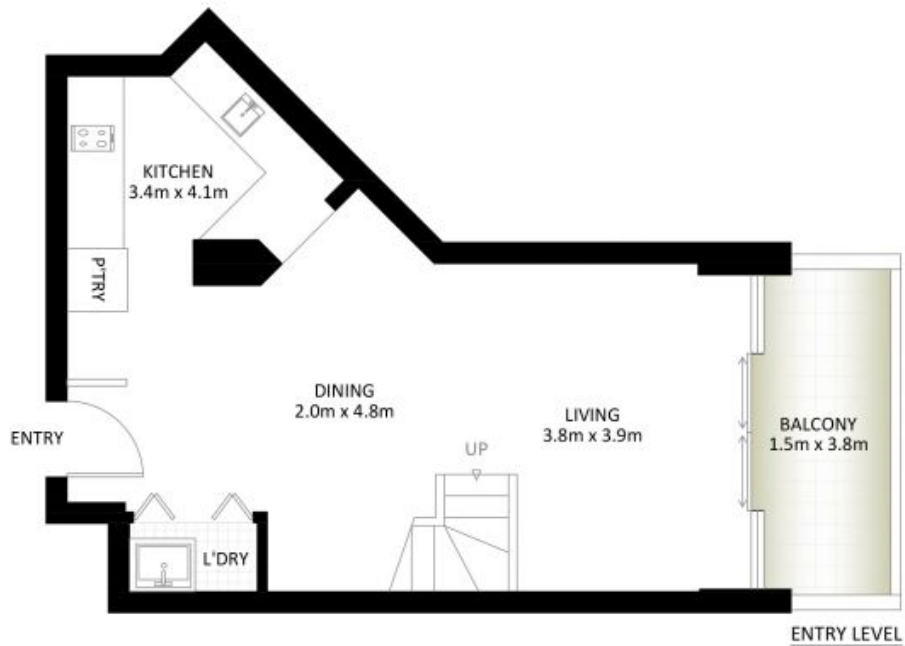
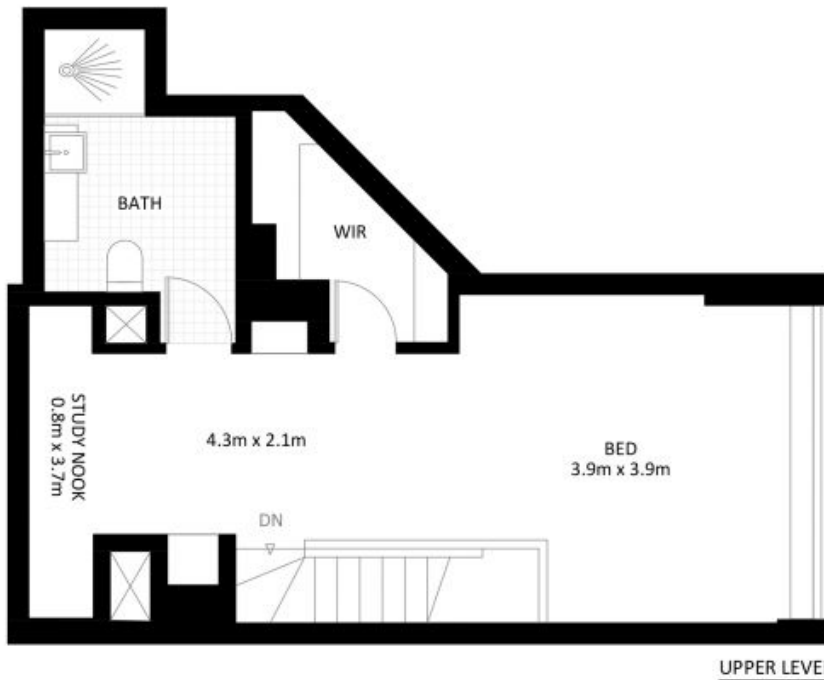
Joss Reid 0414 662 391

Jason Boon 0418 671 494

Geoff Cox 0418 231 004

Proudly Richardson&Wrench

Richardson & Wrench Elizabeth Bay / Potts Point
02 8356 2700



SECURITY CAR SPACE
(NOT ACTUAL LOCATION)

518/81 Macleay Street, Potts Point

*PLANS SHOWN ONLY INDICATIVE OF LAYOUT. DIMENSIONS ARE APPROXIMATE.

Measurements are approximate and not to scale. The vendor, agency and supplier will accept no liability for its accuracy. Interested parties are advised to make their own independent enquiries.

