



## 10/11 Wylde Street Potts Point, NSW

1 bed | 1 bath

- Charming 1-bed haven in highly regarded Deco building
- Unrestricted company title building, superbly maintained
- Designer interiors with leafy street outlook, very peaceful
- Tranquil bedroom with extensive b/in robes and ensuite
- Radiant living area with adjoining sunroom and balcony
- Miele gas kitchen w/ marble benches, d/washer, laundry
- Marble bathroom, high ceilings, Black Japan floorboards
- In beautiful condition, common rooftop with superb views
- Moments to harbour, Finger Wharf, minutes to Macleay St

# R&W

[rwebay.com.au/7793034](http://rwebay.com.au/7793034)

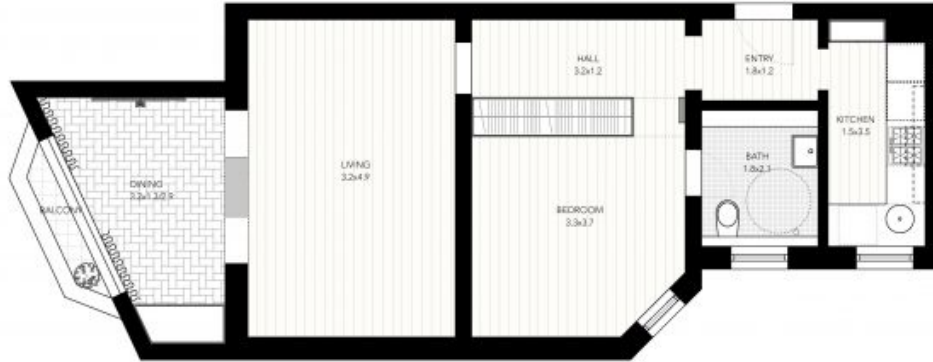
Jason Boon 0418 671 494

Joss Reid 0414 662 391

Geoff Cox 0418 231 004

**Proudly Richardson&Wrench**

Richardson & Wrench Elizabeth Bay / Potts Point  
02 8356 2700



Every precaution has been taken to establish accuracy of the information in this brochure but does not constitute any representation by the vendor or agent.

**R&W**