



1104/81 Macleay Street Potts Point, NSW

3 bed | 2 bath | 2 car

R&W

A sumptuous radiant haven gracing one of Potts Point's most revered architectural landmarks, this exceptional 2-level, 3-bedroom apartment presents an unparalleled opportunity to bask in the zenith of opulence paired with awe-inspiring vistas in an exceedingly convenient Potts Point locale. Situated on the 11th floor within the prestigious "Ikon" and boasting a spacious layout with views from nearly every room, it epitomises the quintessence of luxury living, boasting expansive panoramic views, and parking for 2 cars.

Upon entering, you are welcomed by an atmosphere of abs...

rwebay.com.au/7799041

Jason Boon 0418 671 494

Geoff Cox 0418 231 004

Joss Reid 0414 662 391

Proudly Richardson&Wrench

Richardson & Wrench Elizabeth Bay / Potts Point
02 8356 2700

APARTMENT 1104/81 MACLEAY STREET POTTS POINT



LEVEL ONE



CAR SPACES
(NOT ACTUAL LOCATION)



Contact

Jason Boon

Phone: 8356 2700 Mobile: 0418 671 494
Email: jboon@rwebay.com.au

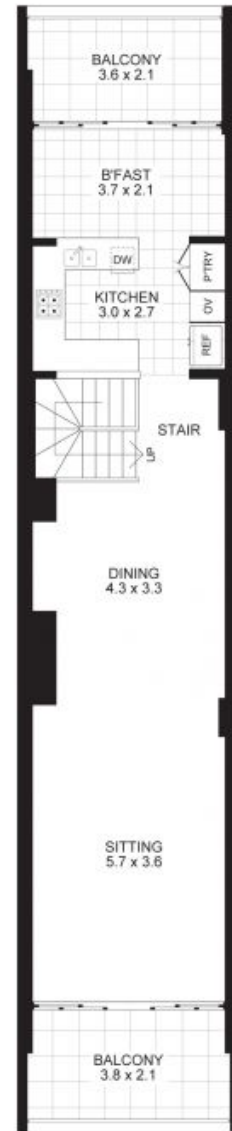
Geoff Cox

Phone: 8356 2734 Mobile: 0418 231 004
Email: gcox@rwebay.com.au

PROMOPLANS ...adding REAL value!

E&OE This plan is for illustrative purposes only and dimensions are approximate. It does not constitute part of any legal document or commercial contract for the sale or lease of this property.

COPYRIGHT © 2012 PROMOPLANS 02 9572 7111
Warning: Usage restricted under the Copyright Act



LEVEL TWO

R&W

Elizabeth Bay / Potts Point
8356 2700