



## 42/93 Elizabeth Bay Road Elizabeth Bay, NSW

3 bed | 2 bath | 2 car

**R&W**

This sumptuous home seems to float atop the shimmering waters of Rushcutters Bay, offering a truly intimate harbour experience at one of Sydney's most prestigious addresses, the Mirvac-built Kincoppal. Occupying a vast stretch of prized harbour frontage, immaculate gardens surround the luxury 3-bedroom apartment, while a flawless renovation brings Hamptons-style elegance to the interiors.

A classic formal dining room flows to the expansive liv...

[rwebay.com.au/7800983](http://rwebay.com.au/7800983)

Jason Boon 0418 671 494

Geoff Cox 0418 231 004

Joss Reid 0414 662 391

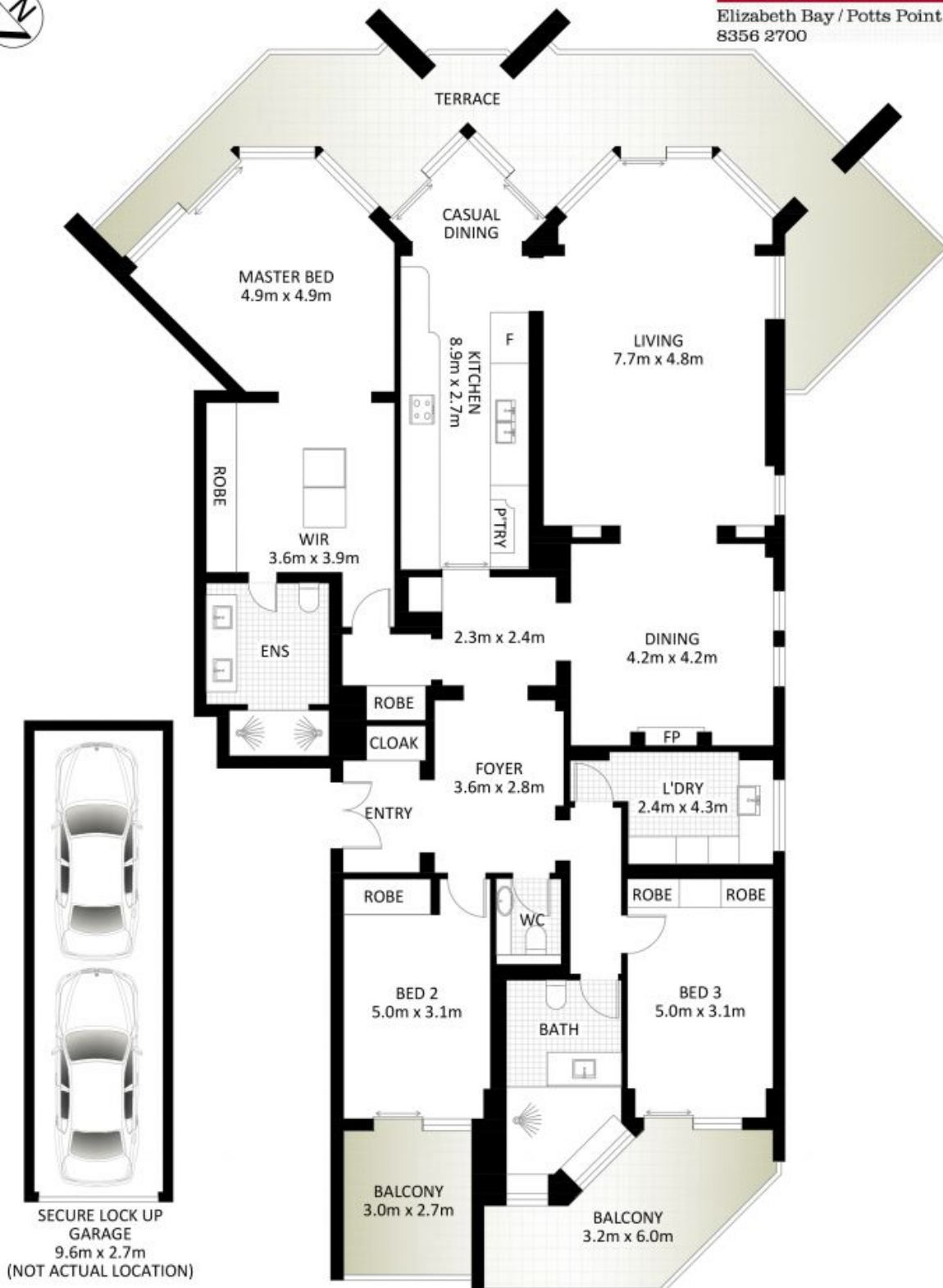
**Proudly Richardson&Wrench**

Richardson & Wrench Elizabeth Bay / Potts Point  
02 8356 2700



**R&W**

Elizabeth Bay / Potts Point  
8356 2700



## 42/93 Elizabeth Bay Road, Elizabeth Bay

\*PLANS SHOWN ONLY INDICATIVE OF LAYOUT. DIMENSIONS ARE APPROXIMATE.

Measurements are approximate and not to scale. The vendor, agency and supplier will accept no liability for its accuracy. Interested parties are advised to make their own independent enquiries.

Every precaution has been taken to establish accuracy of the information in this brochure but does not constitute any representation by the vendor or agent.

**R&W**