



## 1003/73 Victoria Street Potts Point, NSW

2 bed | 2 bath | 1 car

**R&W**

Immaculate home in hugely convenient position with secure level walk in access from Victoria St to spacious home spread over 2 levels, extensively renovated with meticulous attention to detail. The lower-level features fine finishes and floating floorboards throughout a combined dining/living area, which leads to a large balcony, perfect for entertaining. The inclusion of glass balustrades & floor to ceiling bi-fold doors serves to open the space and further enhance the enviable view.

Custom kitchen w/ Carrara marble bench

Outgoings:...

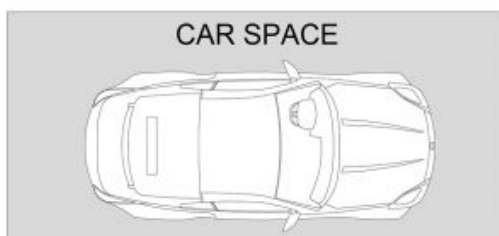
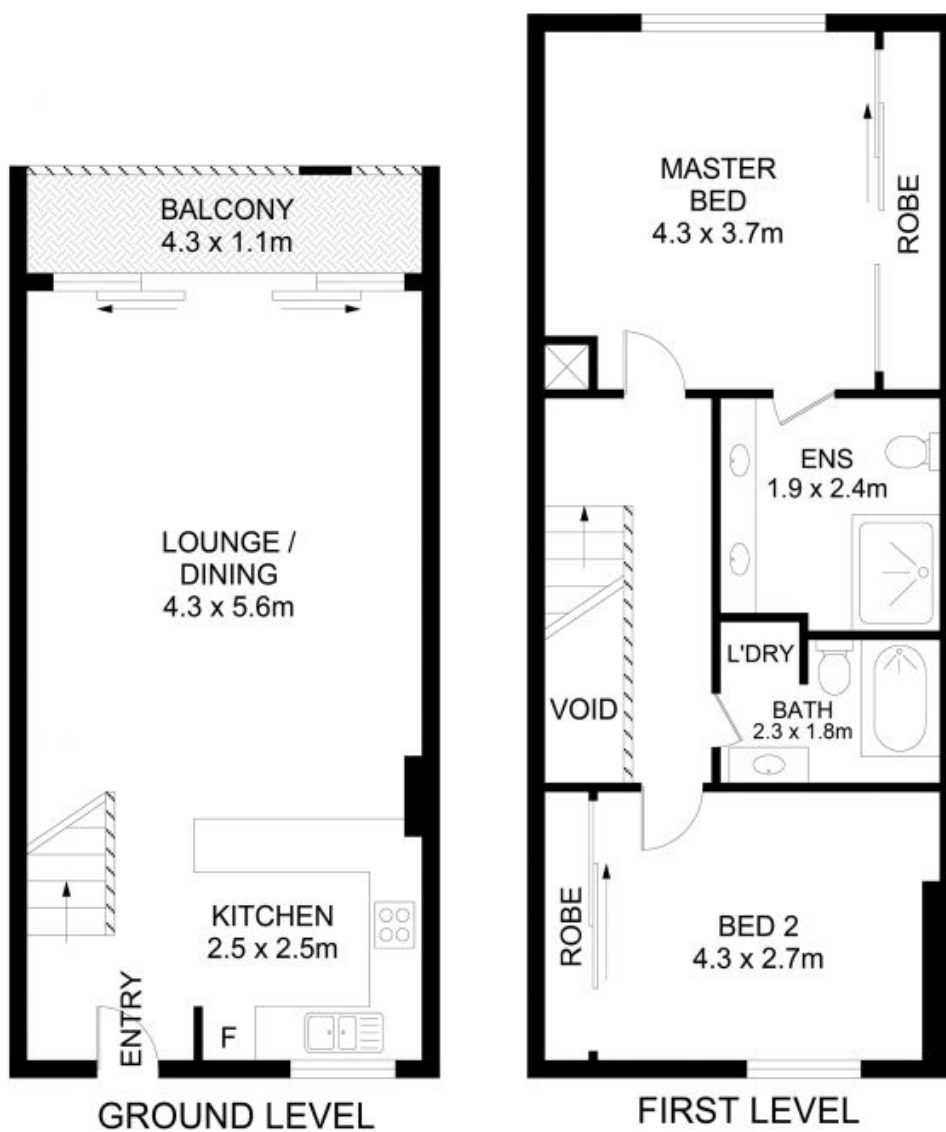
[rwebay.com.au/7801124](https://www.rwebay.com.au/7801124)

Luke McDonnell 0418 844 110

Penny Timothy 0418 546 500

**Proudly Richardson&Wrench**

Richardson & Wrench Elizabeth Bay / Potts Point  
02 8356 2700



## 1003/73 Victoria Street, Potts Point



### Disclaimer

Floor Plan measurements are approximate and are for illustrative purposes only. While we cannot doubt the floor plans accuracy, we make no guarantee, warranty or representation as to the accuracy and completeness of the floor plan.

Every precaution has been taken to establish accuracy of the information in this brochure but does not constitute any representation by the vendor or agent.

**R&W**