



## 29/20 Macleay Street Potts Point, NSW

1 bed | 1 bath

"Twenty" is a fine example of the famous Art Deco apartment buildings synonymous with Potts Point. The grand entry foyer has been beautifully refurbished to maintain the classical features of the period but with the added benefit of a fast modern lift to whisk you up to the 2nd floor where this spacious, approx 50m2, apartment awaits. Original waxed floorboards and decorative fireplace, high ceilings, study space off the bedroom, Art Deco bathroom with bath and separate shower make this the perfect opportunity to own a chic apartment in this sought-after neighbourhood.

? Security building with beautifully refurbished entry ...

# R&W

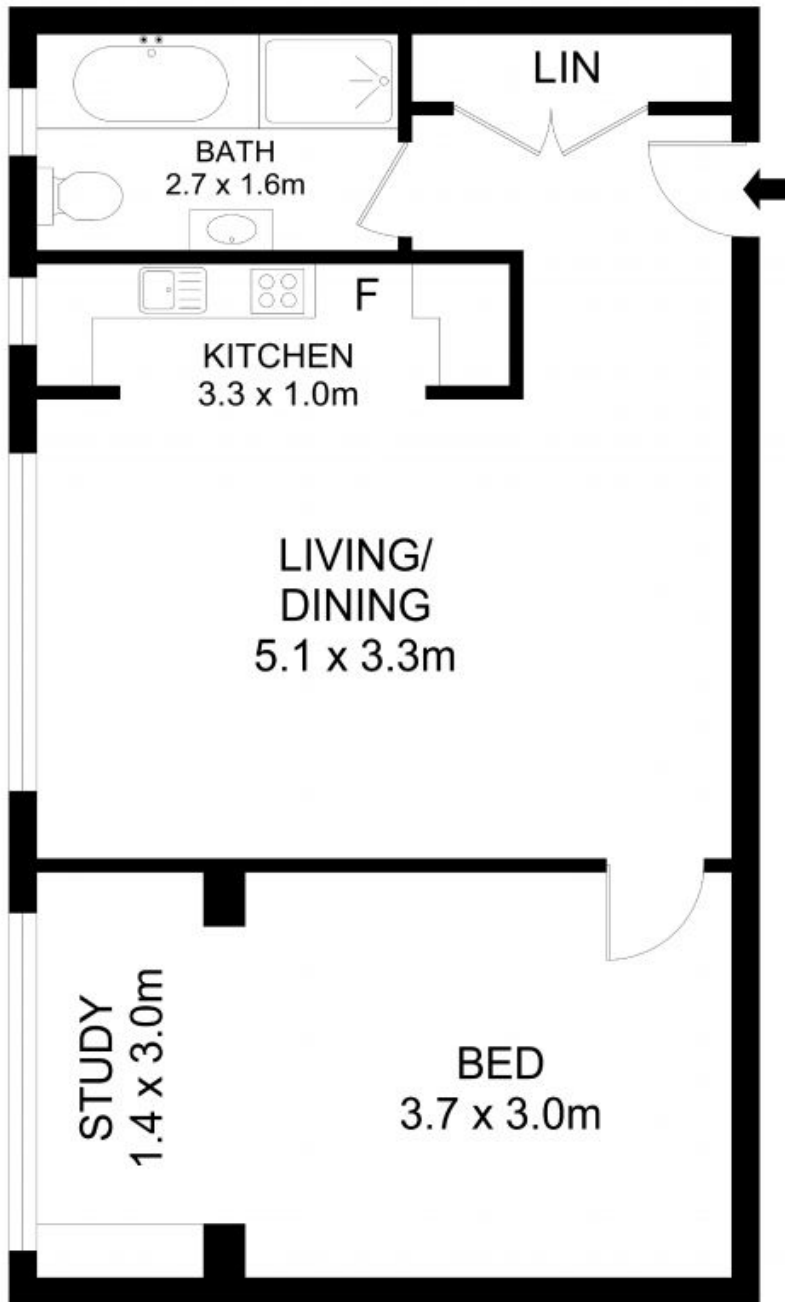
[rwebay.com.au/7810191](http://rwebay.com.au/7810191)

Penny Timothy 0418 546 500

Luke McDonnell 0418 844 110

**Proudly Richardson&Wrench**

Richardson & Wrench Elizabeth Bay / Potts Point  
02 8356 2700



29/20 Macleay Street, Potts Point



**Disclaimer**

Floor Plan measurements are approximate and are for illustrative purposes only. While we cannot doubt the floor plans accuracy, we make no guarantee, warranty or representation as to the accuracy and completeness of the floor plan.

Every precaution has been taken to establish accuracy of the information in this brochure but does not constitute any representation by the vendor or agent.

