



507/21 Elizabeth Bay Road Elizabeth Bay, NSW

1 bed | 1 bath

R&W

- * Mirvac-built prestigious security complex with high quality finishes
- * Level security lift access via elegant lobby with concierge services
- * Foyer, scenic outlook as soon as the apartment's front door opens
- * Loft-style double bedroom with ample built-ins
- * Smart fully tiled designer bathroom
- * Idyllic balcony extends out from spacious open plan living/dining, granite floor
- * Caesarstone open kitchen, Miele cooktop and dishwashe...

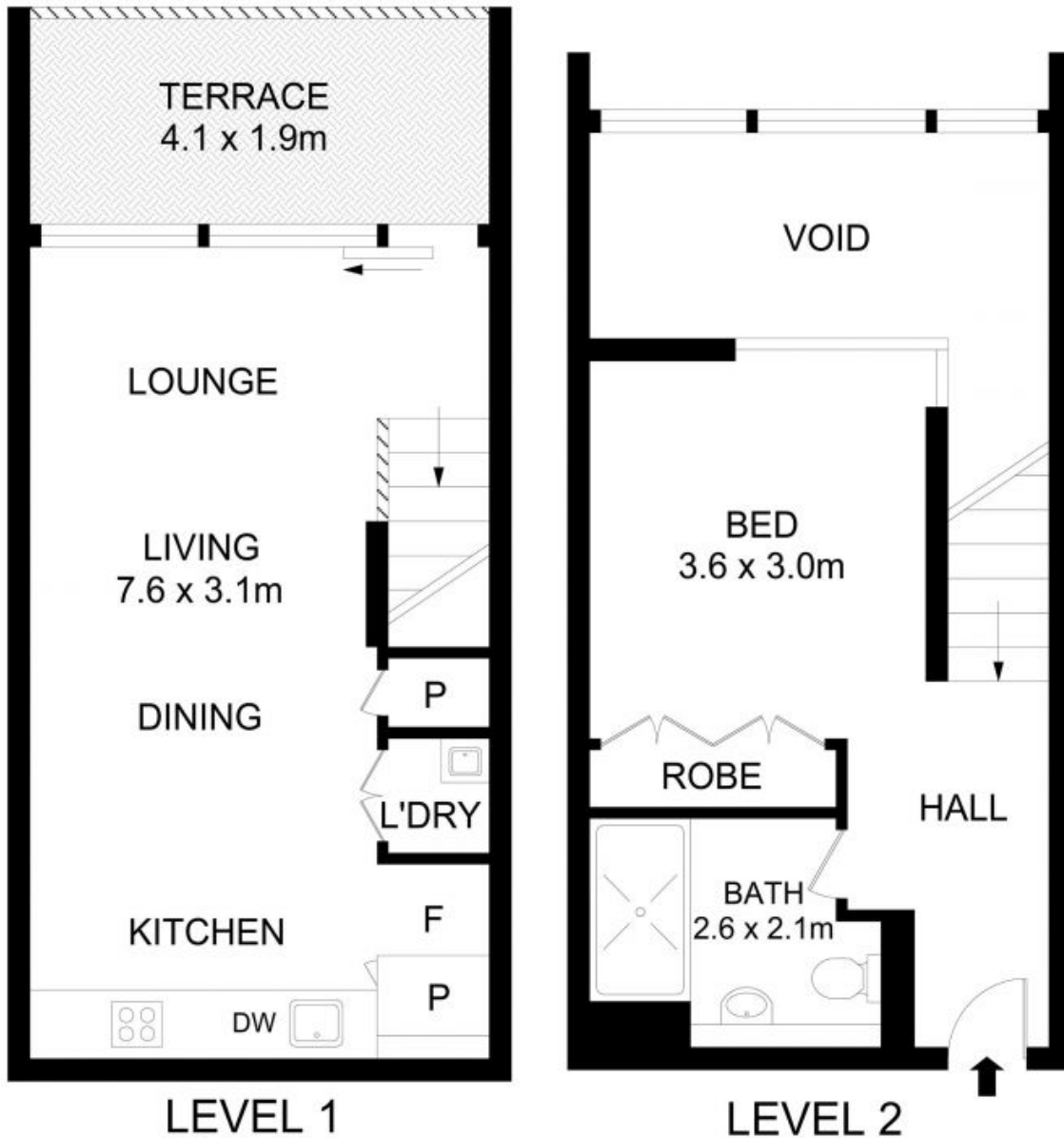
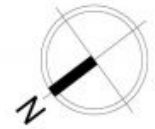
rwebay.com.au/7810405

Angelo Bouras 0401 658 653

Thomas Arthurs 0414 026 412

Proudly Richardson&Wrench

Richardson & Wrench Elizabeth Bay / Potts Point
02 8356 2700



507/21 Elizabeth Bay Road, Elizabeth Bay

Disclaimer

Floor Plan measurements are approximate and are for illustrative purposes only. While we cannot doubt the floor plans accuracy, we make no guarantee, warranty or representation as to the accuracy and completeness of the floor plan.